



morton.

WENTWORTH POINT 601/4 Nuvolari Place

 1  1  1

Located in Palermo at The Waterfront, here is your opportunity to move into this very neat one bedroom apartment. A short stroll to The Piazza, local restaurants, convenience store, pharmacy, public transport off Hill Road and ferry service to Parramatta and City CBD. The Waterfront is located moments to Sydney Olympic Park main venues and train station, Bicentennial Park and Millennium Parklands.

This apartment is located on level 6 with lovely views overlooking the Palermo landscapes from the balcony, features combined living and dining room, reverse cycle air conditioner, full size kitchen with plenty of cupboard space, stainless steel appliances including microwave, dishwasher and gas cooking in clean condition, laundry room and clothes dryer, single security undercover car space and a storage cage.

Residents at The Waterfront have the opportunity to become a member of the Pulse Club giving you access to the local gym, in-door lap pool, outdoor Oasis pool, steam room and two tennis courts. All apartments at the Waterfront are Foxtel-ready and Homelinx-enabled for all internet and telecommunication services.

View

As advertised or by appointment

Agent

Morton RE



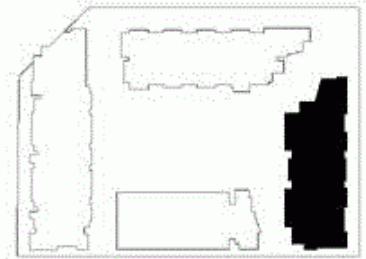
 rentals@morton.com.au

morton.com.au

- ENTRY 1
- LIVING 2
- DINING 3
- KITCHEN 4
- BEDROOM 5
- BATHROOM 6
- LAUNDRY 7
- LINEN 8
- TERRACE 9
- CLOTHES DRYING 10



LEVEL 06



PALERMO

UNIT: **601**

TYPE: 1 Bedroom

UNIT AREA: 65.0 sqm

OUTDOOR AREA: 11.0 sqm



Disclaimer: All layouts are indicative only, and subject to change.

ALLEN JACK+COTTIER

