



morton.

WENTWORTH POINT 23 Savona Drive

 2  2  1

Open plan, split level, modern appliances, split system air-conditioning, pool, gym, single car space and storage cage.

All apartments come standard with: electric oven, microwave, dishwasher, gas cook top, range hood, a dryer, Ceasar stone bench top, plus the unique Homelinx enabled telecommunications system.



NOTE: All apartments at The Waterfront Wentworth Point are Homelinx enabled. You are unable to connect with other communications suppliers such as Telstra or Optus. The resort facilities including the heated pool, gym and tennis courts are available for use by residents only on a pay per use arrangement.

View

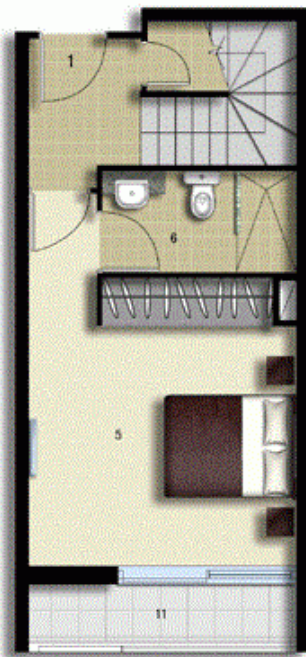
As advertised or by appointment

Agent

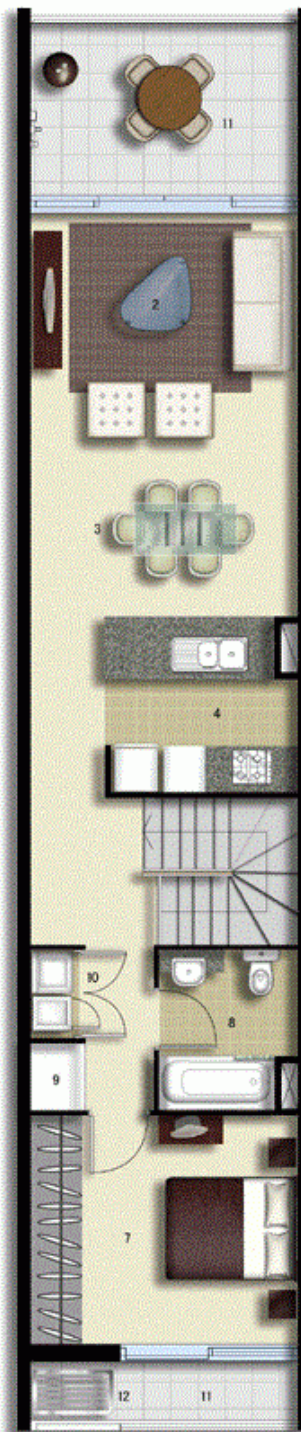
Morton RE

  rentals@morton.com.au

morton.com.au

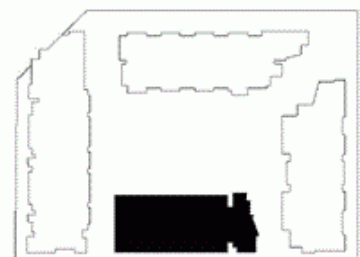


LEVEL 03



LEVEL 04

- ENTRY 1
- LIVING 2
- DINING 3
- KITCHEN 4
- MAIN BEDROOM 5
- ENSUITE 6
- BEDROOM 2 7
- BATHROOM 8
- LINEN 9
- LAUNDRY 10
- BALCONY 11
- CLOTHES DRYING 12



PALERMO

UNIT: **324**

TYPE: 2 Bedroom

UNIT AREA: 94.0 sqm

OUTDOOR AREA: 18.0 sqm



0 2.5 5M



Disclaimer: All layouts are indicative only, and subject to change.