



# morton.

**WENTWORTH POINT** 325/23 Savona Drive

 2  2  1

Modern 2 bedroom split-level apartment located in the Palermo building. Features include built-in-robies in both rooms, Open plan living area with split system air conditioning which then opens out onto good sized balcony off both bedrooms, new carpet throughout. Designer style kitchen with stainless steel appliances and gas cooking. Modern bathroom plus ensuite to main and internal laundry with dryer. Set insecurity building with lift access, outdoor pool, gym and single car space with storage cage.

Situated in Palermo at The Waterfront, here is your opportunity to move into this two bedroom apartment. Located a short stroll from The Promenade, The Piazza, local restaurants, convenience store, pharmacy, public transport off Hill Road and ferry service to Parramatta and City CBD. The Waterfront is located moments to Sydney Olympic Park main venues and train station, Bicentennial Park and Millennium Parklands.

Located on level 3, this apartment is split level, brand new

[morton.com.au](http://morton.com.au)

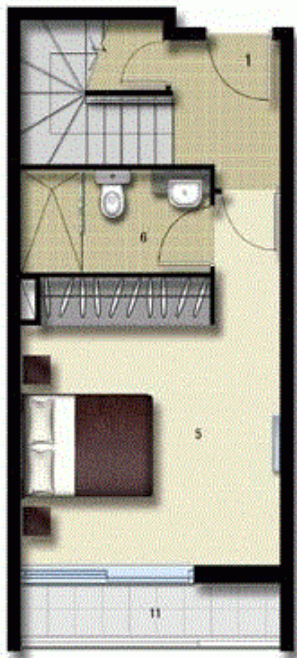
### View

As advertised or by appointment

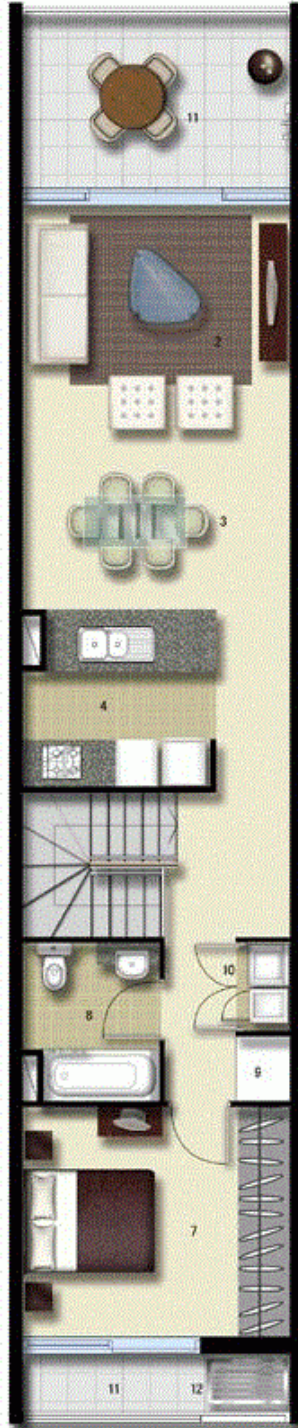
### Agent

**Morton RE**

  [rentals@morton.com.au](mailto:rentals@morton.com.au)

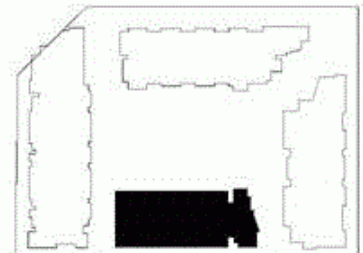


LEVEL 03



LEVEL 04

- ENTRY 1
- LIVING 2
- DINING 3
- KITCHEN 4
- MAIN BEDROOM 5
- ENSUITE 6
- BEDROOM 2 7
- BATHROOM 8
- LINEN 9
- LAUNDRY 10
- BALCONY 11
- CLOTHES DRYING 12



# PALERMO

UNIT: **325**

TYPE: **2 Bedroom**

UNIT AREA: **94.0 sqm**

OUTDOOR AREA: **18.0 sqm**



Disclaimer: All layouts are indicative only, and subject to change.

ALLEN JACK+COTTIER



0 25 50