



# morton.

**WENTWORTH POINT** 715/37 Amalfi Drive

 2  2  1

Very spacious two bedroom spit level apartment with open plan lounge and dining with very large designer style kitchen with stone bench tops, dish washer, stainless steel appliances, gas cooking. Includes a large balcony overlooking the Piazza, and a second balcony from the kitchen. Modern bathroom plus ensuite to main and internal laundry with dryer. Set in security building with carspace & walk to transport. Opportunity to join the Pulse Club as a member and access the gym, lap pool, tennis courts and other great outdoor activities. Estate Homelinx enabled for internet and telecommunications.

### View

As advertised or by appointment

### Agent

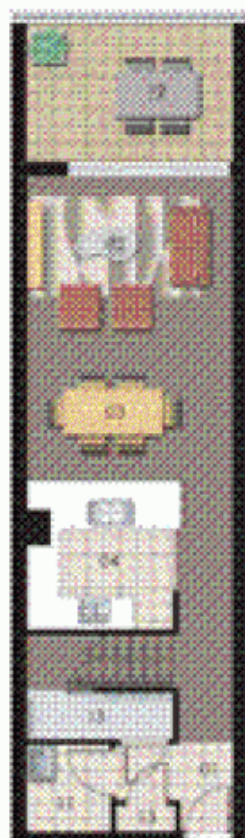
**Morton RE**

  [rentals@morton.com.au](mailto:rentals@morton.com.au)

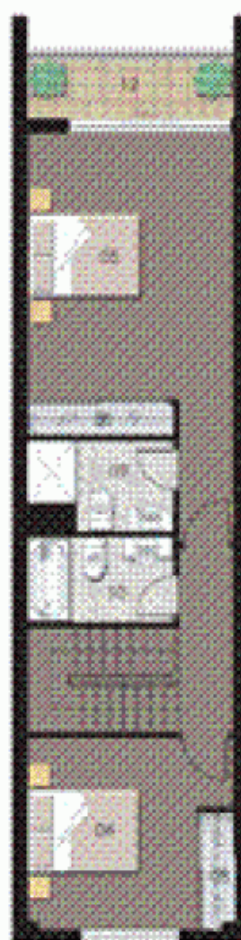
[morton.com.au](http://morton.com.au)

# SORRENTO

THE WATERFRONT  
AT ROXBURY BAY



LEVEL 7



LEVEL 8

2 1 0 2 4 2

|           |    |          |    |
|-----------|----|----------|----|
| ENTRY     | 05 | WALKROBE | 08 |
| LIVING    | 10 | DECK     | 05 |
| DINING    | 10 | BATHROOM | 05 |
| KITCHEN   | 04 | LAUNDRY  | 07 |
| BEDROOM 1 | 10 | BALCONY  | 02 |
| BEDROOM 2 | 10 | STORAGE  | 05 |
| BEDROOM 3 | 07 |          |    |



## Unit 715

|             |           |
|-------------|-----------|
| Unit Number | 15        |
| Type        | 2 Bedroom |
| Unit Area   | 95 sqm    |
| Balance     | 14.4qm    |
| Total       | 109 sqm   |