



morton.

WENTWORTH POINT 442/25 Bennelong Parkw

 2  2  1

Located in Positano at The Waterfront, here is your opportunity to move into this spacious two bedroom apartment. A short stroll to The Piazza, local restaurants, convenience store, pharmacy, public transport off Hill Road and ferry service to Parramatta and City CBD. The Waterfront is located moments to Sydney Olympic Park main venues and train station, Bicentennial Park and Millennium Parklands.

This apartment is located on level 4, features combined living room which flows onto good size balcony, full size kitchen with plenty of cupboard space, stainless steel appliances including microwave, dishwasher and gas cooking in clean condition, main bedroom with en-suite, laundry room and clothes dryer, single security undercover car space.

Residents at The Waterfront have the opportunity to become a member of the Pulse Club giving you access to the local gym, in-door lap pool, outdoor Oasis pool, steam room and two tennis courts. All apartments at the Waterfront are Foxtel-ready and Homelinx-enabled for all internet and

View

As advertised or by appointment

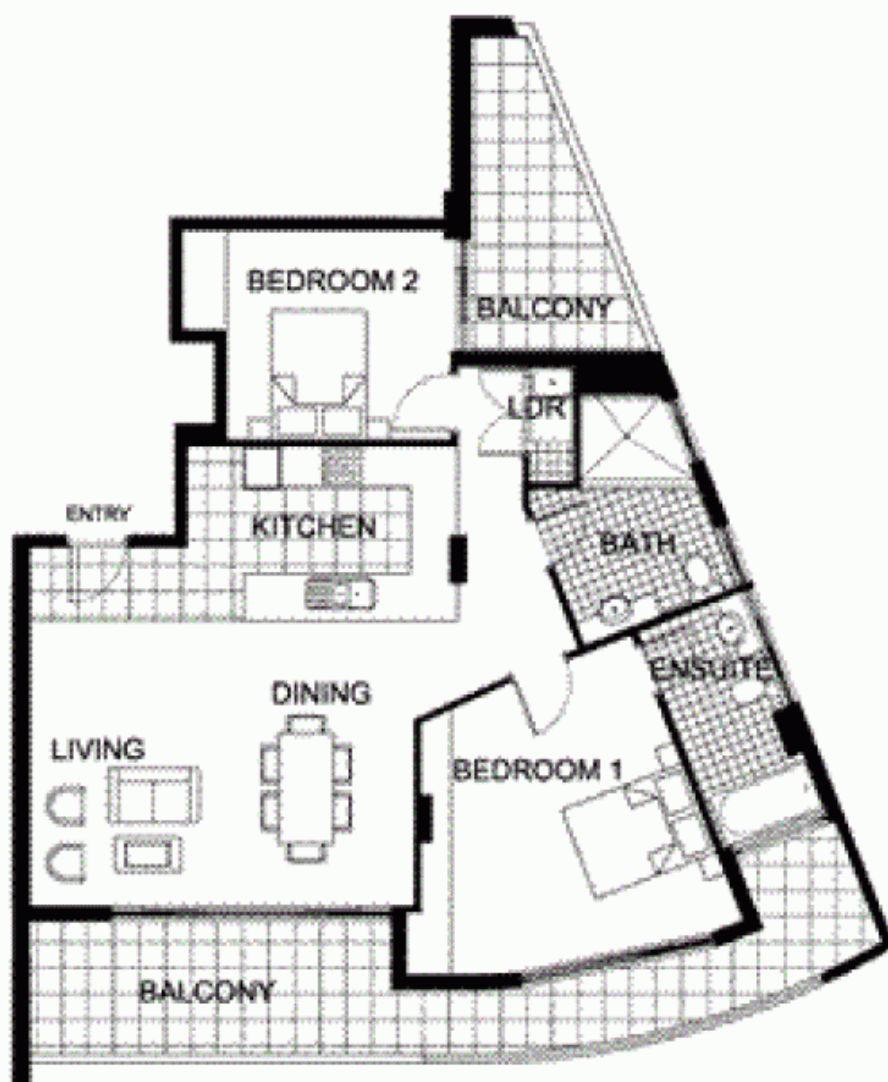
Agent

Morton RE



rentals@morton.com.au

morton.com.au



"The information contained herein is intended as an introduction to the general contents of the project and is subject to variation. Interested parties should rely on their own enquiries and the contract for sale. The developer reserves the right to vary from these descriptions as it deems necessary or as any relevant authority may require."



THE WATERFRONT
AT HOWERSHAY BAY



2 BEDROOM

APARTMENT 442(Exist No.4.506)

INTERNAL AREA 85 sqm

OUTDOOR AREA 24 sqm

TOTAL AREA 109 sqm



LEVEL 4.5

POSITANO