



**morton.**

**WENTWORTH POINT** 603/3 Stromboli Strait

 2  2  2

Located in Napoli at The Waterfront, here is your opportunity to move into this lovely two bedroom apartment. A short stroll to The Piazza, local restaurants, convenience store, pharmacy, public transport off Hill Road and ferry service to Parramatta and City CBD. The Waterfront is located moments to Sydney Olympic Park main venues and train station, Bicentennial Park and Millennium Parklands.

This apartment is located on level 6, features reverse cycle air conditioner in combined living rooms which flows onto a generous size balcony. Full size separate kitchen in very good clean condition, plenty of cupboard space, stainless steel appliances including microwave, dishwasher and gas cooking, built-in robes to both rooms, ensuite to main bedroom and access to balcony. Full size laundry room with clothes dryer, single security undercover car space.

Residents at The Waterfront have the opportunity to become a member of the Pulse Club giving you access to the local gym, in-door lap pool, outdoor Oasis pool, steam room and two

**View**

As advertised or by appointment

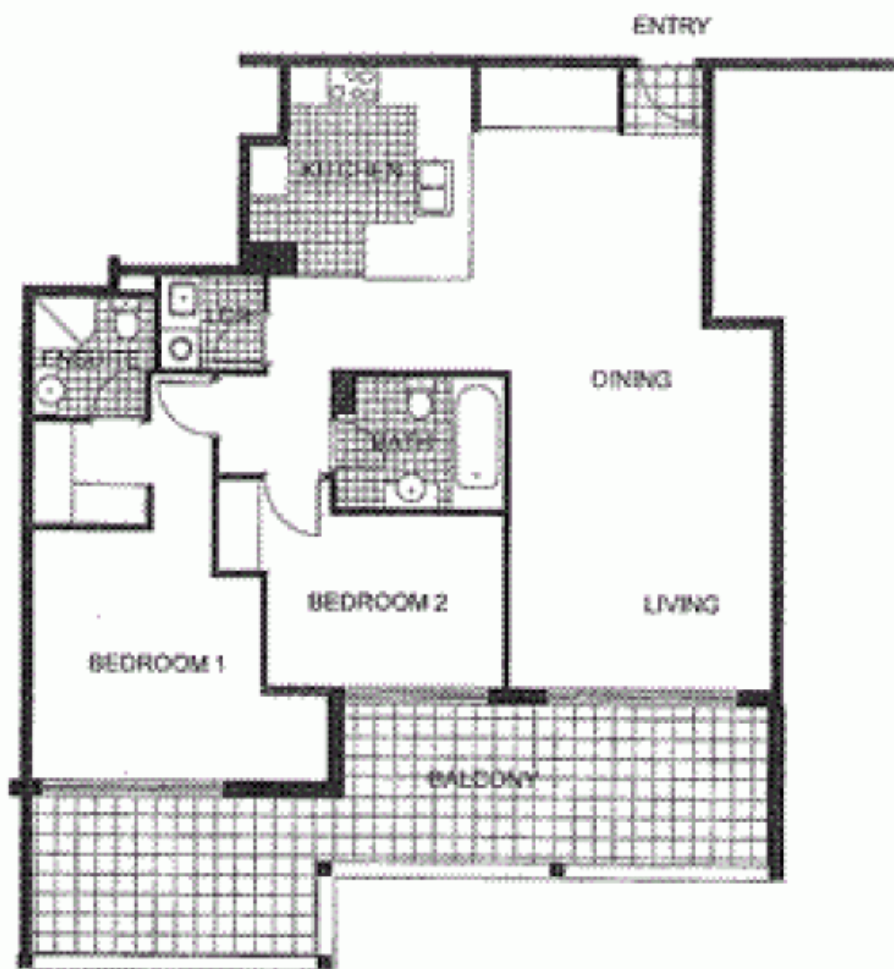
**Agent**

**Morton RE**



 rentals@morton.com.au

**morton.com.au**



0 1 2 3 4 5

"The information contained herein is intended as an introduction to the general content of the project and is subject to variation. Prospective parties should rely on their own inquiries and due diligence for facts. The developer reserves the right to vary from these descriptions as it deems necessary or as any official authority may require."



LEVEL 6

THE WATERFRONT

AT DEVELOPER'S RISK

2 BEDROOM

APARTMENT 603

TYPE K

INTERNAL AREA 80 sqm

OUTDOOR AREA 27 sqm

TOTAL AREA 122 sqm

NAPOLI