



morton.

WENTWORTH POINT 730/25 Bennelong Parkw

 1  1  1

Located in Positano at The Waterfront, here is your opportunity to move into this spacious one bedroom apartment. A short stroll to The Piazza, local restaurants, convenience store, pharmacy, public transport off Hill Road and ferry service to Parramatta and City CBD. The Waterfront is located moments to Sydney Olympic Park main venues and train station, Bicentennial Park and Millennium Parklands.

This FRESHLY PAINTED apartment is located on level 7, cooler and ceiling fan in combined living room, open kitchen with plenty of cupboard space, stainless steel appliances including microwave and dishwasher, brand new oven, cook top and range hood, study room, laundry room and clothes dryer, single security undercover car space.

Residents at The Waterfront have the opportunity to become a member of the Pulse Club giving you access to the local gym, in-door lap pool, outdoor Oasis pool, steam room and two tennis courts. All apartments at the Waterfront are Foxtel-ready and Homelinx-enabled for all internet and

View

As advertised or by appointment

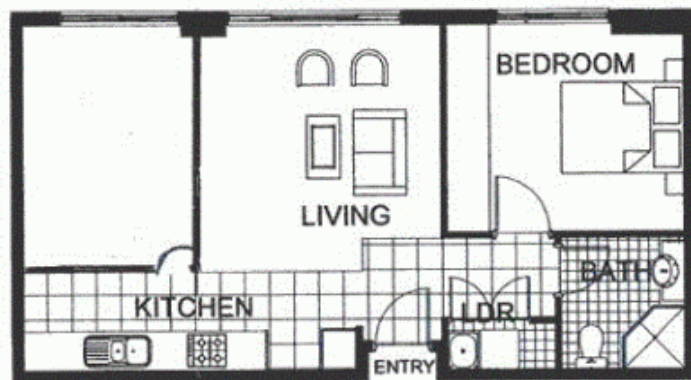
Agent

Morton RE



 rentals@morton.com.au

morton.com.au



The information contained herein is intended as an introduction to the general content of the project and is subject to variation. Interested parties should rely on their own enquiries and the contract for sale. The developer reserves the right to vary from these descriptions as it deems necessary or as any relevant authority may require.



1 BEDROOM

APARTMENT 730(Exist No.702)

INTERNAL AREA 52sqm

TOTAL AREA 52sqm



LEVEL 7

POSITANO



THE WATERFRONT
AT HOMEBUSH BAY