



# morton.

**Wentworth Point** 502/4 Nuvolari Place

 1  1  1

Located in Palermo at The Waterfront, here is your opportunity to move into immaculate and spacious one bedroom apartment. A short stroll to The Piazza, local restaurants, convenience store, pharmacy, public transport off Hill Road and ferry service to Parramatta and City CBD. The Waterfront is located moments to Sydney Olympic Park main venues and train station, Bicentennial Park and Millennium Parklands.

Modern one bedroom apartment overlooking the Palermo courtyard. Features include built in robes, split system air conditioning and open plan living and dining area. Caesar stone kitchen with stainless steel appliances and gas cooking, internal laundry with dryer. Set in security building with outdoor pool and gym, lift access plus single car space and storage.

Residents at The Waterfront have the opportunity to become a member of the Pulse Club giving you access to the local gym, in-door lap pool, outdoor Oasis pool, steam room and two tennis courts. All apartments at the Waterfront are

[morton.com.au](http://morton.com.au)

### View

As advertised or by appointment

### Agent

**Morton RE**

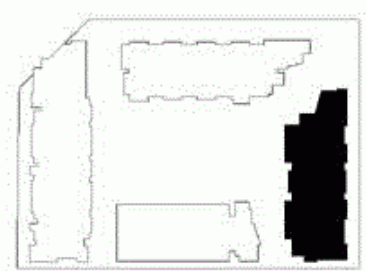


 [rentals@morton.com.au](mailto:rentals@morton.com.au)

- ENTRY 1
- LIVING 2
- DINING 3
- KITCHEN 4
- BEDROOM 5
- ENSUITE 6
- LAUNDRY 7
- LINEN 8
- BALCONY 9
- CLOTHES DRYING 10



LEVEL 05



# PALERMO

UNIT: **502**

TYPE: 1 Bedroom

UNIT AREA: 54.0 sqm

OUTDOOR AREA: 11.0 sqm



Disclaimer: All layouts are indicative only, and subject to change.

