



morton.

WENTWORTH POINT 25 Bennelong Road

 3  2  2

Located in Positano at The Waterfront, here is your opportunity to move into this spacious three bedroom apartment. A short stroll to The Piazza, local restaurants, convenience store, pharmacy, public transport off Hill Road and ferry service to Parramatta and City CBD. The Waterfront is located moments to Sydney Olympic Park main venues and train station, Bicentennial Park and Millennium Parklands.

This apartment is located on level 7 "top floor" features split system air conditioning, designer kitchen with modern stainless steel appliances and gas cooking and plenty of cupboard space. Generous size combined living areas, good size bedrooms with built-in wardrobes, ensuite, split level, study area, laundry room and clothes dryer, large wrap around balcony great for entertaining with absolute water views, double security undercover car space.

Residents at The Waterfront have the opportunity to become a member of the Pulse Club giving you access to the local gym, in-door lap pool, outdoor Oasis pool, steam room and two

View

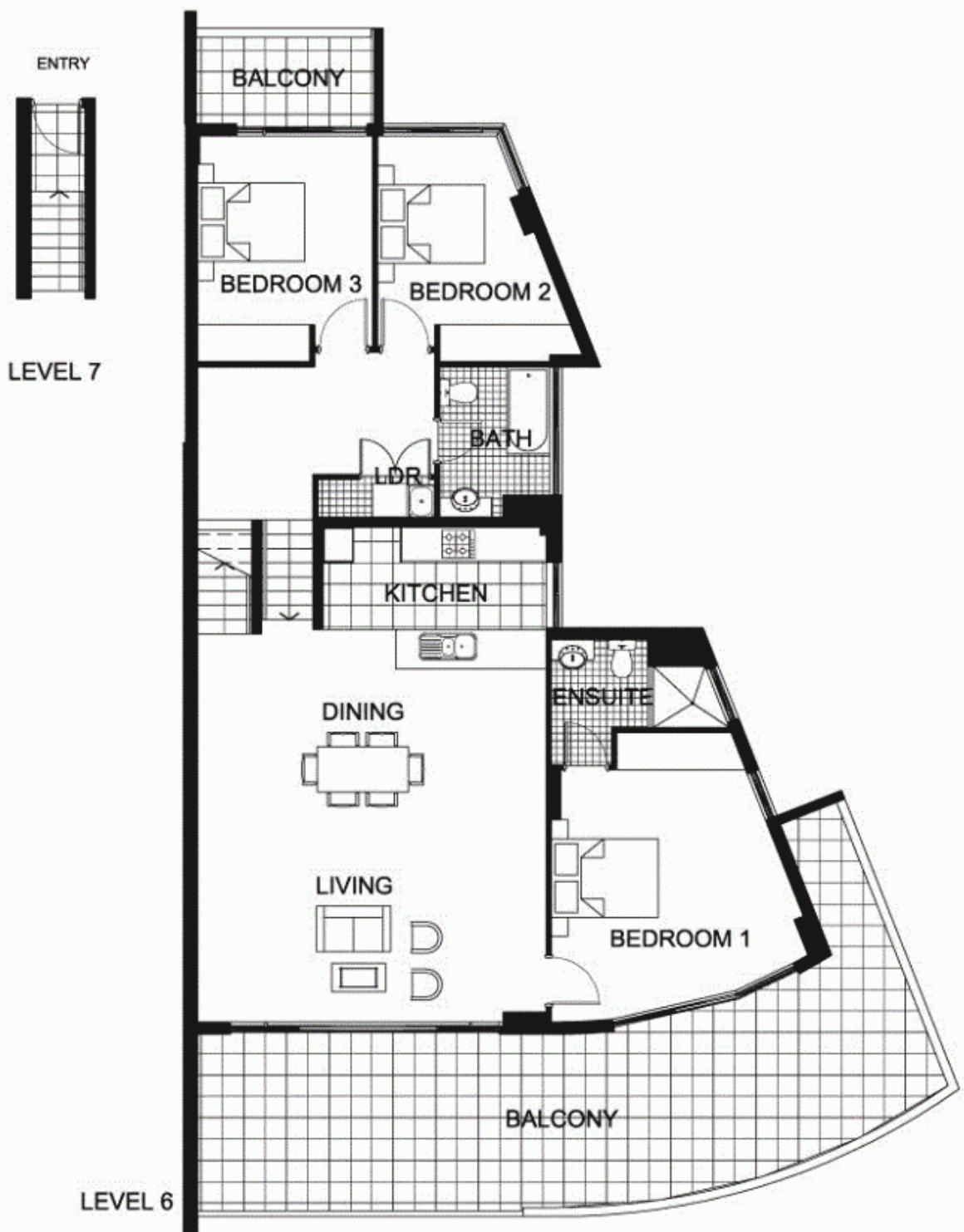
As advertised or by appointment

Agent

Morton RE

  rentals@morton.com.au

morton.com.au



"The information contained herein is intended as an introduction to the general content of the project and is subject to variation. Interested parties should rely on their own enquiries and the contract for sale. The developer reserves the right to vary from these descriptions as it deems necessary or as any relevant authority may require."



3 BEDROOM

APARTMENT 735(Exist No.609)

INTERNAL AREA 121sqm

OUTDOOR AREA 46sqm

TOTAL AREA 167sqm



LEVEL 6

POSITANO