



**morton.**

**Sydney** 307/45 Shelley Street

 1  1  1

This very attractive apartment is located on the 3rd floor of Sydney's chic King St development. The generous living area provides more than enough room for relaxing and dining and seamlessly flows to the balcony, perfect for entertaining.

- Quality finishes & desirable floor plan
- Large bedroom with built-in robes
- Modern bathroom
- Entertainers balcony
- Secure parking
- Study/Media room
- Endless transport options, convenient locale
- Stroll to Sydney's top restaurants & bars

**View**

As advertised or by appointment

**Agent**

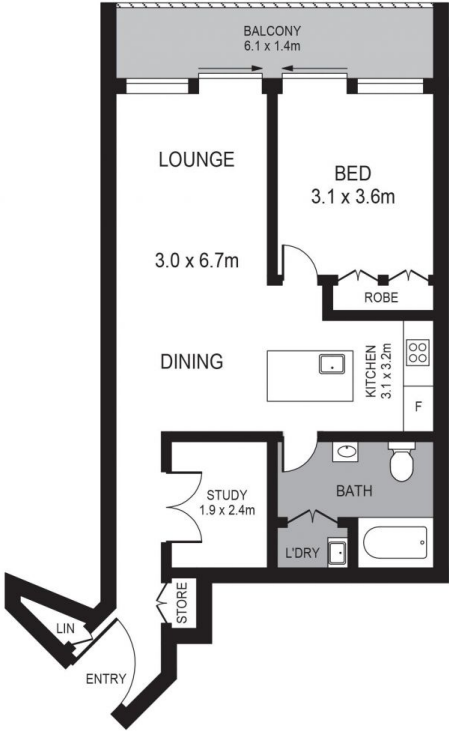
**Morton**



 info@morton.com.au

**morton.com.au**

307/45 SHELLEY STREET, SYDNEY



Please note these measurements are approximate only. The plan is intended as a rough guide for illustrative purpose. It is not warranted or guaranteed to be correct nor is it part of the scale or contract

