



morton.

Sydney 349/298 Sussex Street



Located on level 21 in the sought after Maestri Towers, this immaculate apartment offers the perfect executive address with its sun lit aspect, top facilities and convenient location.

- 61 sqm open plan layout leading onto balcony off living area
- Granite kitchen, Smeg appliances
- Reverse cycle air conditioning
- Internal laundry with dryer
- Bedroom with built in wardrobe
- Bathroom with bath and separate shower
- One secure car space

View

As advertised or by appointment

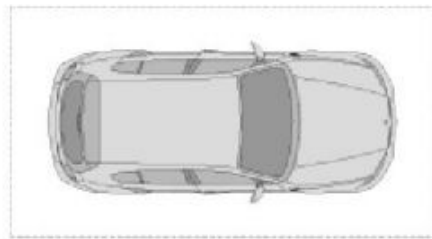
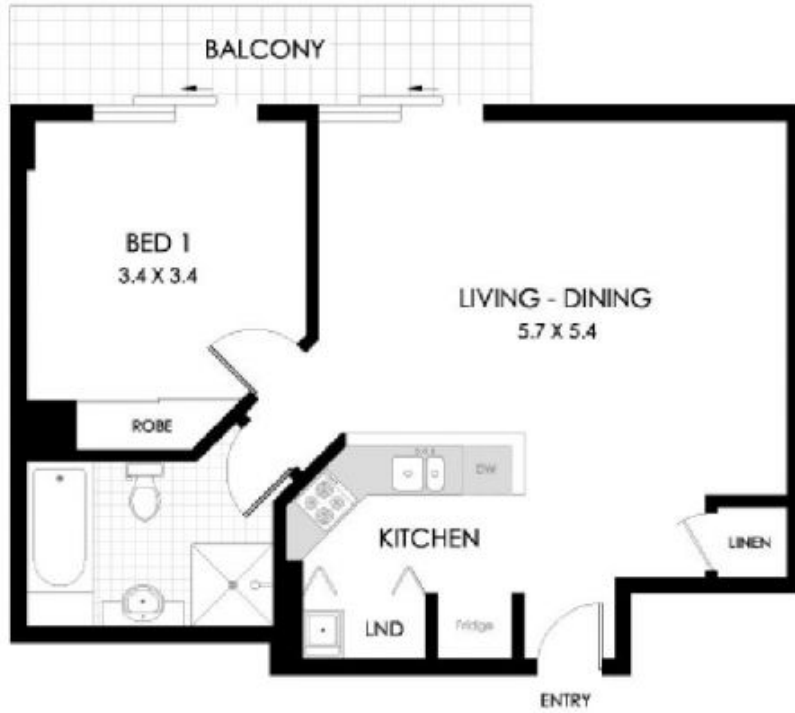
Agent

Morton RE



rentals@morton.com.au

morton.com.au



SECURITY CARSPACE

0 1 2 3 SCALE (METRES)
 PLANS SHOWN ARE ONLY INDICATIVE OF LAYOUT. DIMENSIONS ARE APPROXIMATE

All information contained herein is gathered from sources we believe to be reliable, however we cannot guarantee its accuracy and interested persons should rely on their own enquiries. Dimensions are approximate.



349/298 SUSSEX STREET

SYDNEY

Internal: 54m²

Balcony: 7m²

Apartment Size: 61m²