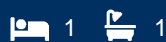




**morton.**

**Sydney** Level 4/157 Liverpool Street



This generous 74sqm one bedroom + study is positioned on Level 4 of The Hyde and features north facing Hyde Park views. The well designed floor plan provides high ceilings and ample light.

- Sought after one bedroom plus study layout
- Plenty of natural light flowing through this lovely north facing apartment
- Living room offers access to the balcony with pleasant views across to Hyde Park
- Open plan gourmet kitchen
- Large bedroom with built-ins and access to the balcony
- Internal laundry and air conditioning
- Designed by multi award-winning architects WOHA, The Hyde is an exclusive address for the discerning city dweller
- Photos of a similar property with same floor plan. More photos to come next.

**View**

As advertised or by appointment

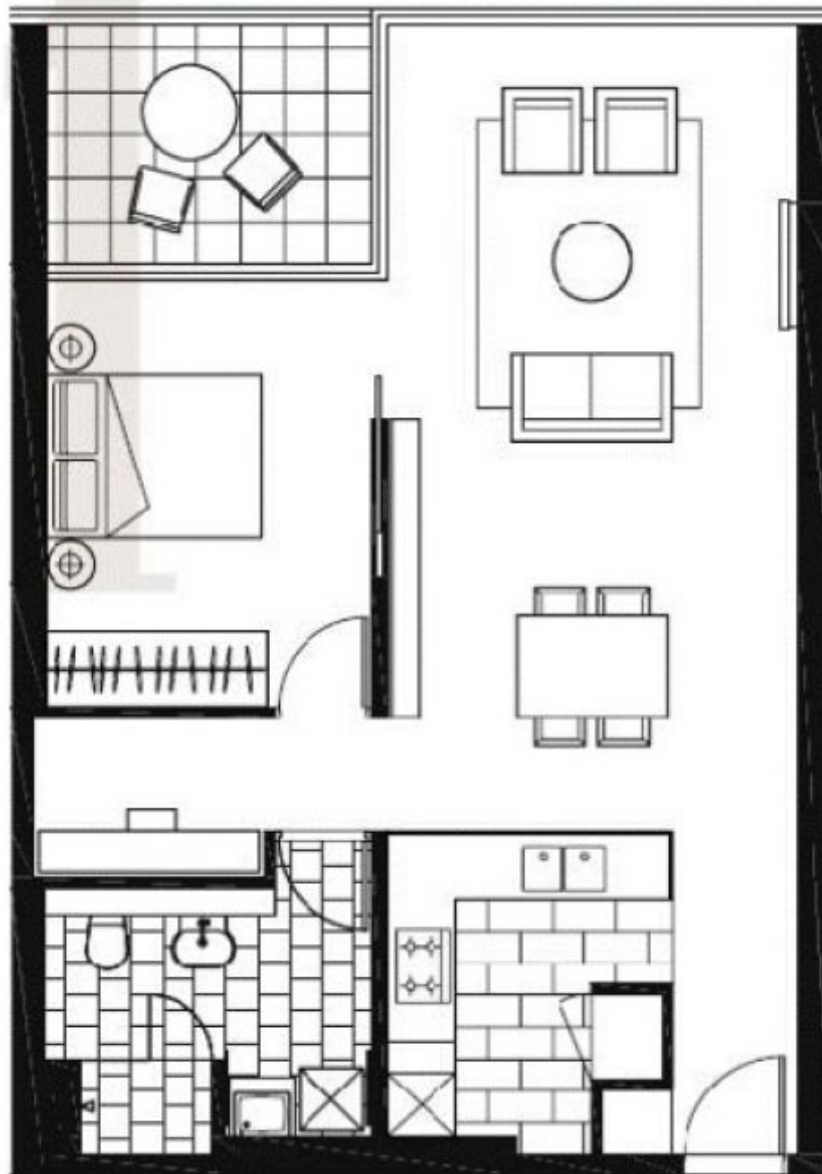
**Agent**

**Morton RE**



rentals@morton.com.au

**morton.com.au**



**1 Bedroom + Study**

**Approx. Total Area: 74sq m**