



**morton.**

**Sydney** 1002/148 Elizabeth Street



Enjoy an unprecedented central location in the heart of Sydney's CBD, with this unique 10th floor studio apartment at the coveted Hyde Park Towers. Bordering the beautiful parklands of Hyde Park, the residence offers seamless access to all that the city has to offer.

- Large floor plan with all weather balcony
- Modern kitchen with gas stove
- Ducted air con throughout
- Heated indoor pool, spa, and gymnasium
- Spacious studio apartment set over 58sqm
- Built in Wardrobe

**View**

As advertised or by appointment

**Agent**

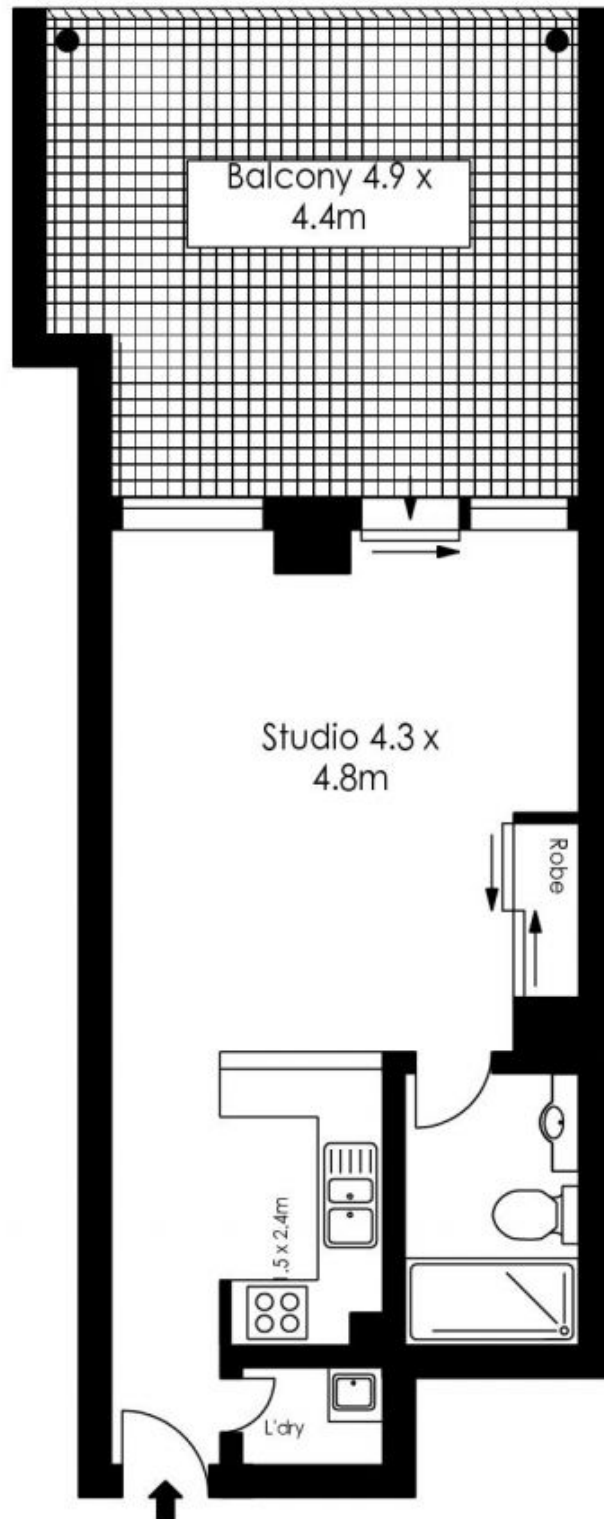
**Morton RE**



rentals@morton.com.au

**morton.com.au**

# 1002/148 Elizabeth Street, Sydney



The information above is provided in good faith and has been provide to us from a variety of sources. We have not verified whether the information is accurate and do not have any belief one way or other in its accuracy. We do not accept any responsibility to any person for its accuracy and do no more than pass it on. All interested parties should rely on their own inquiries in order to determine whether or not this information is in fact accurate.