



morton.

Sydney 3202/197 Castlereagh Street

🛏 3 🚗 2 🚗 2

Victoria Tower 3202 presents a rare opportunity for a 104 sqm three bed apartment on the 32nd floor with enviable harbour views and unrivalled convenience in the heart of the Sydney CBD. Unobstructed breathtaking views unveil the graceful grounds of Hyde Park, Sydney Harbour and beyond to the Pacific Ocean.

- Light and bright open plan living/dining area opening onto two north east facing covered balconies
- Brand new engineered floorboards throughout
- Entertainers granite gas kitchen, ducted air con throughout, NBN connected (tenant cost)
- Master bedroom with split system air con (as well as ducted air con), walk-in robes, ensuite and private Juliet balcony with breathtaking harbour views
- Two additional double bedrooms, with mirrored built-ins, both with park and harbour views
- Secure basement tandem car space (23sqm, not suitable for two large cars) spacious internal laundry
- Security entrance, on-site building manager/concierge and

View

As advertised or by appointment

Agents

Morton RE



rentals@morton.com.au

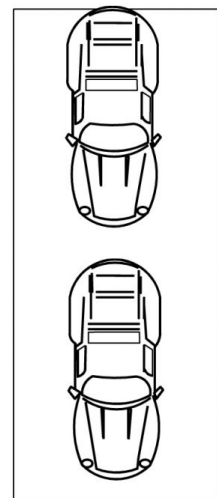
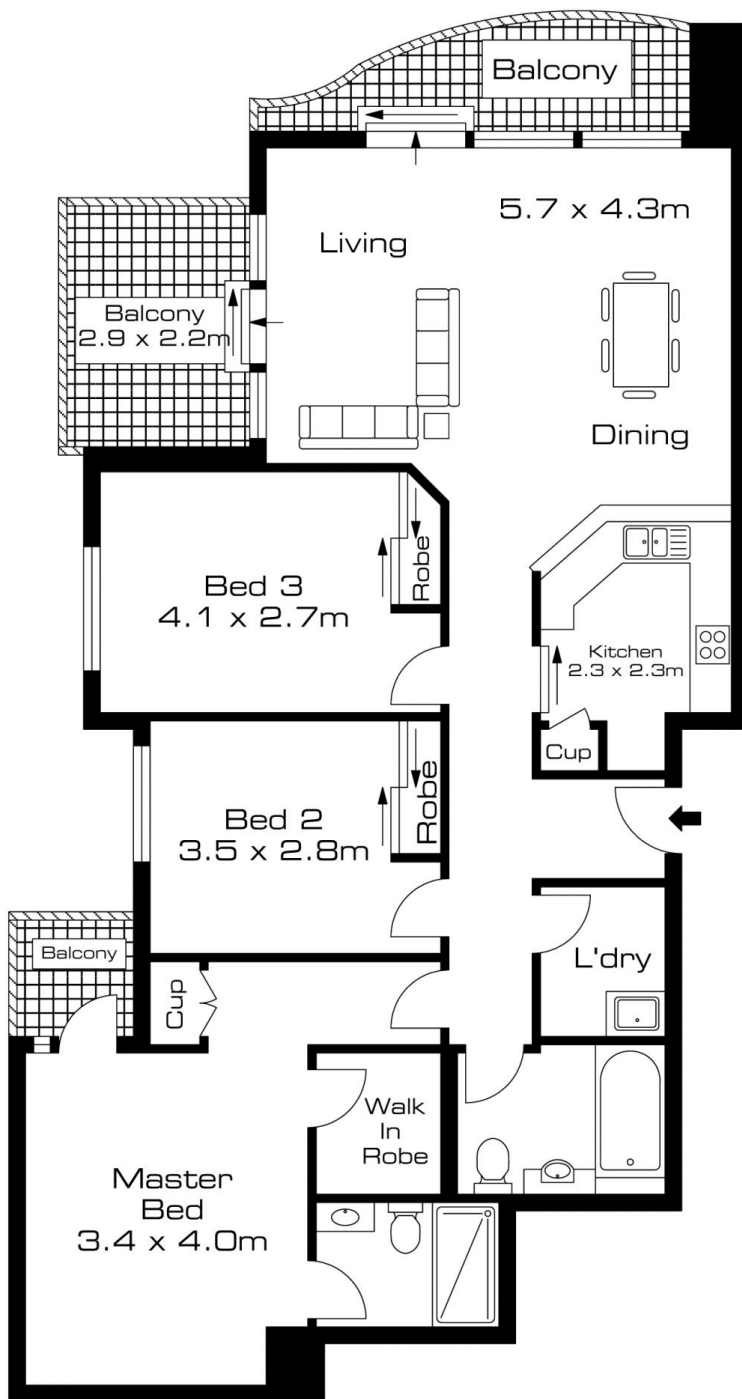
David Lipman



0409 663 535

✉ david.lipman@morton.com.au

morton.com.au



Large Car
 Space
 2.5 x 9.3m