



morton.

Surry Hills 1204/20 Pelican Street

 2  2  1

Located in the highly sought-after Monument building, this stunning apartment is perfectly set in one of the inner city's premier communities. Ideally low maintenance with an intuitive floorplan and views to Hyde Park and the skyline, this is a home of undeniable appeal.

- Open entertaining, distinct lounge/dining spaces
- Inviting master bedroom has a walk-in robe and an ensuite
- Deluxe electric kitchen has CaesarStone island benchtops
- Well configured with ideal separate bedroom wings
- European internal laundry, reverse cycle air conditioning, concierge, building manager, basement secure parking and storage cage
- Floor-to-ceiling windows, filled with sun and balcony
- A contemporary offering from the renowned Melbourne firm Wood/Marsh Architecture
- Manicured gardens, heated outdoor pool and gym.

View

As advertised or by appointment

Agents

Morton RE



 rentals@morton.com.au

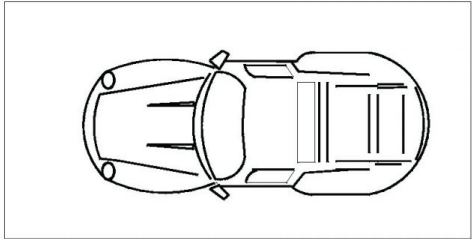
David Lipman



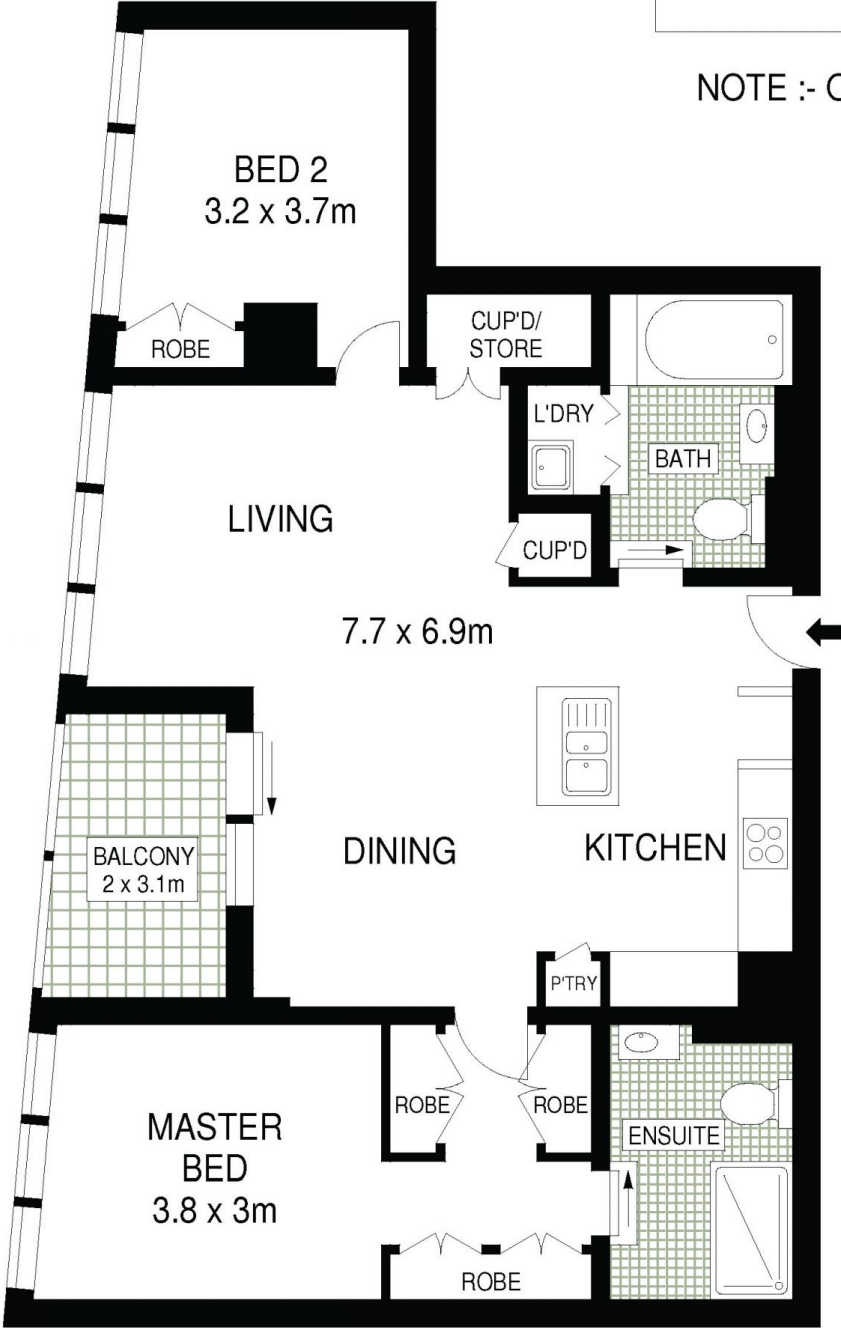
0409 663 535

 rentals@morton.com.au

morton.com.au

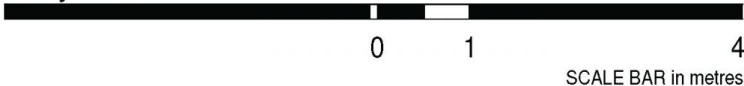


NOTE :- ONE SECURITY CAR SPACE



LEVEL TWELVE

1204/20 PELICAN STREET
Surry Hills



ALL INFORMATION CONTAINED HEREIN IS GATHERED FROM SOURCES WE BELIEVE TO BE RELIABLE. HOWEVER WE CANNOT GUARANTEE ITS ACCURACY AND INTERESTED PERSONS SHOULD RELY ON THEIR OWN ENQUIRIES. DIMENSIONS ARE APPROXIMATE