




morton.

Sydney 412/45 Shelley Street

 2  2

Perched on the 4th floor of the ever popular King Street Wharf, is this spacious apartment. Consisting of a very desirable floor plan with quality finishes and ample space, this apartment has an air of modernity and style. Ideal for the professional on the run wanting to reside in an urban location.

- Entire apartment freshly painted
- Situated in a small boutique building
- Two large double bedrooms with large wardrobes
- Master with ensuite
- Open plan large lounge/dining/kitchen
- Designer kitchen, stainless steel appliances, ample storage
- Luxurious second bathroom
- Internal laundry
- Reverse cycle air conditioning.
- Security access to building with intercom
- Walk to Darling Harbour, CBD & fine dining on the waterfront
- Excellent 24 hour building security
- Parking available at additional cost

View

As advertised or by appointment

Agent

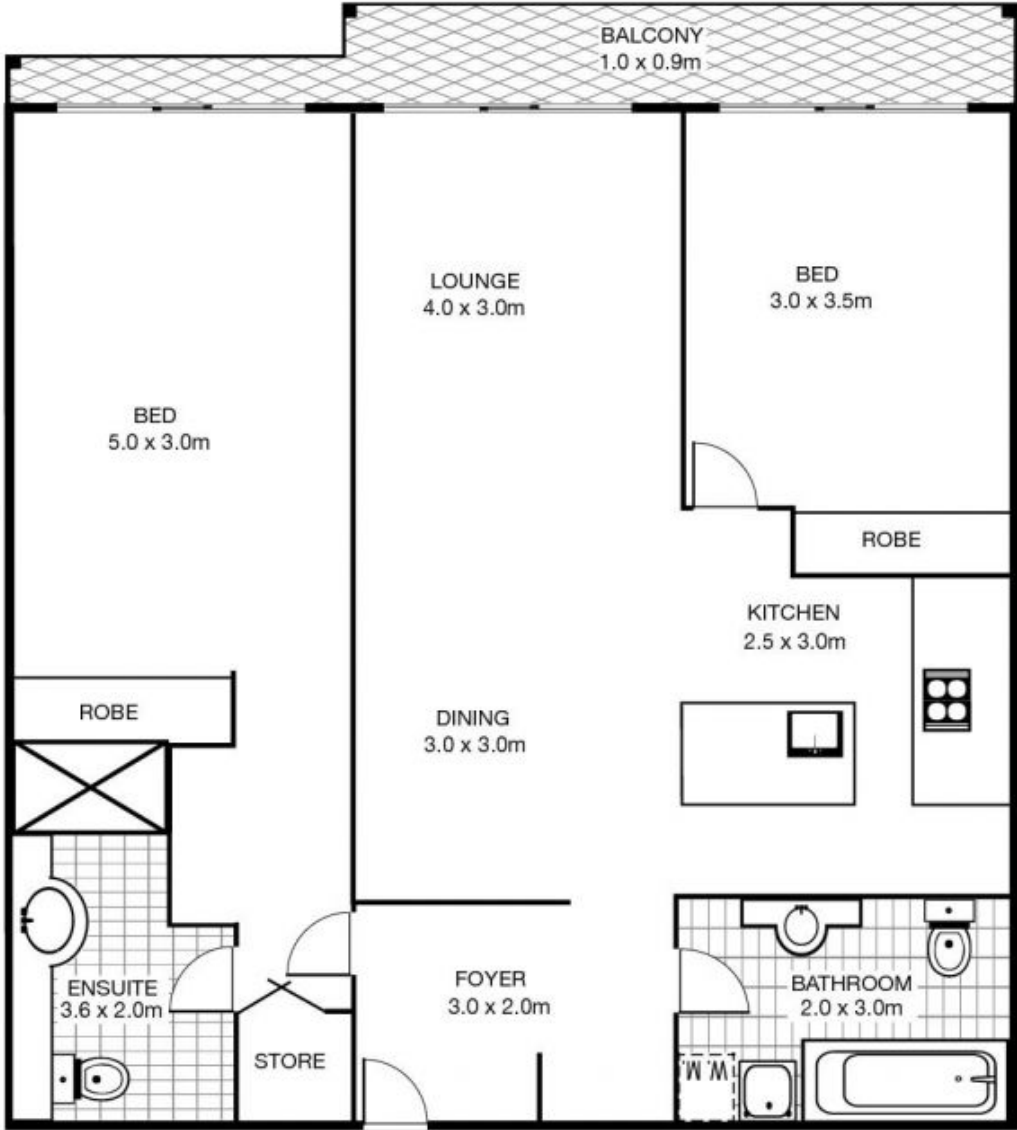
Morton RE



 rentals@morton.com.au

morton.com.au

412/45 Shelley Street
Sydney



This floor plan is intended as a guide only. Layout and dimensions are approximate only. No representations or warranties of any nature whatsoever are given or intended. Any person using this information should rely on their own enquiries.



Floorplans by
surroundpix
loom.au
1300 30 32 40