



morton.

Sydney 1003/11 Alberta Street

 2  2  1

Located on the doorstep of Hyde Park, the apartment lies in the midst of renowned cafes, bars and restaurants. Aspire is only moments away from Museum Station, Pitt Street Mall and Chinatown and will provide a convenient city residence or an astute investment.

Features include:

- Two large bedrooms main with deluxe ensuite bathroom, both with built-in wardrobes
- Polished timber floors throughout living and dining
- Stone bench tops in kitchen and integrated appliances
- Living room offers access to the balcony with Hyde Park and City Views
- Spaced over 92sqm this apartment has generous living and dining areas with adjoining gourmet kitchen
- Additional features include ducted air conditioning, internal laundry, one security car space and intercom access

View

As advertised or by appointment

Agent

Morton RE



 rentals@morton.com.au

morton.com.au

ASPIRE

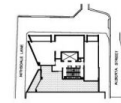
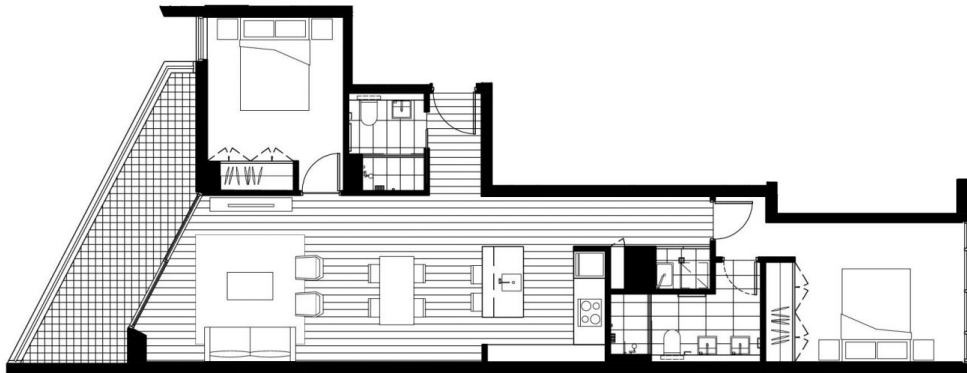
SYDNEY

LEVEL 7 - 15

APARTMENTS
703, 803, 903, 1003,
1103, 1203, 1303,
1403 & 1503

2 BEDROOM

Internal area	78m ²
External area	11m ²
Total area	89m²



Disclaimer: This document was produced prior to commencement of construction. None of the information contained in this document should be relied on or construed as advice, a recommendation or an offer for the sale of property. The developer, its agencies and related entities do not make any representations or give any warranties that the information set out in this document is or will remain accurate or complete at all times and they disclaim all liability for harm, loss, costs, or damage which arises in connection with any use or reliance on the information. Changes may be made during the development and any dimensions, finishes and specifications are subject to change without notice. STCA