



# morton.

**Sydney** 1105/157 Liverpool Street

 2  2  1

## DEPOSIT TAKEN!

- Spacious Two Bed + Study With Stunning Hyde Park and Sydney Harbour Views
- Positioned in the prime north east corner of The Hyde with breathtaking Hyde Park and Sydney Harbour views
- Sought after two bedroom + study layout
- Ample natural light flowing through this lovely north facing apartment
- Living room offers access to the balcony with stunning views across Hyde Park, St Marys Cathedral and Sydney Harbour
- Spaced over 114sqm this apartment has generous living and dining areas with adjoining gourmet kitchen
- Two large bedrooms main with deluxe ensuite bathroom, both with built-in wardrobes
- Additional features include ducted air conditioning, internal laundry, one security car space and intercom access
- Residents have the convenience of an executive 24 hour concierge, 25 metre lap pool, gymnasium, sauna, barbeque, cabana and outdoor terrace

[morton.com.au](http://morton.com.au)

## View

As advertised or by appointment

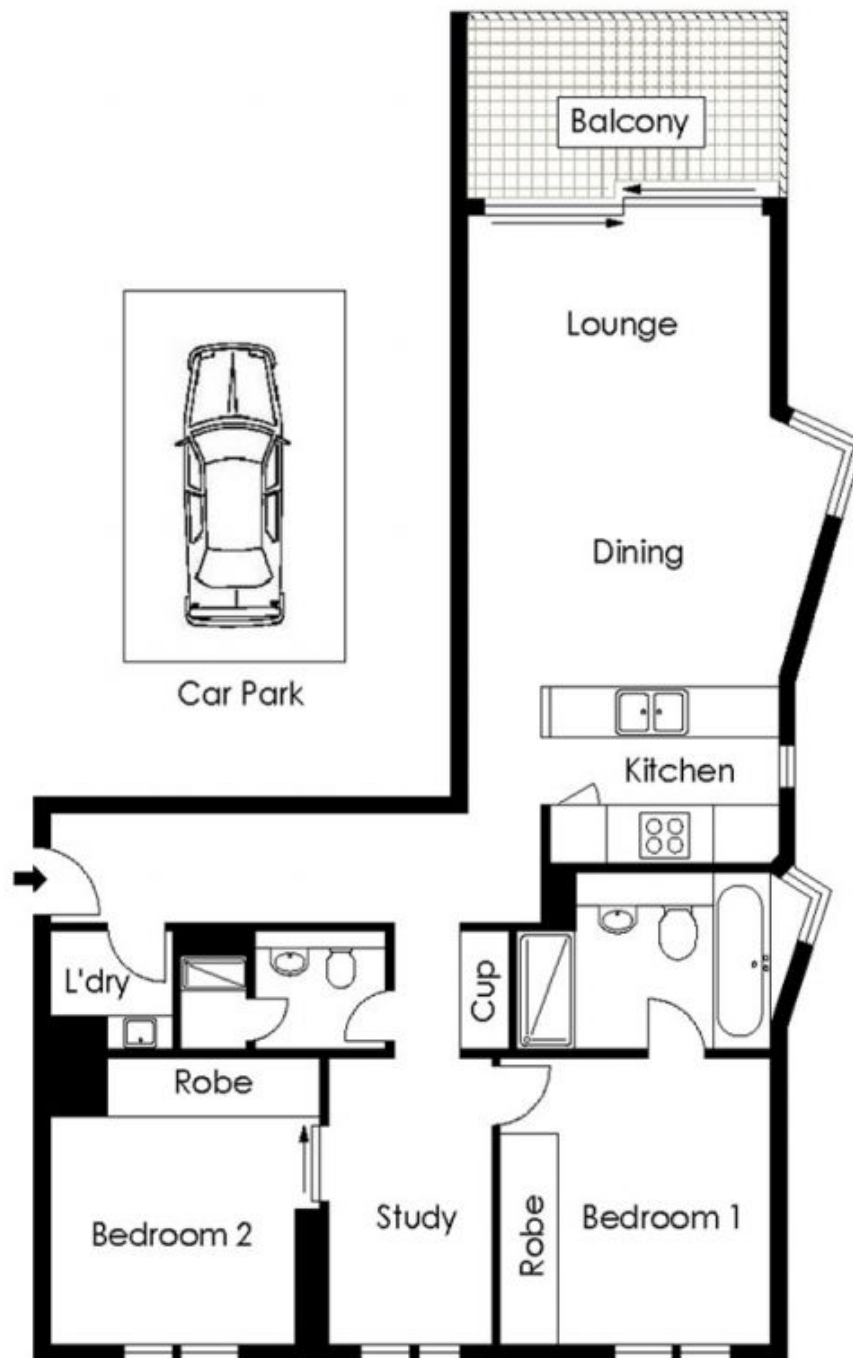
## Agent

**Morton RE**



 [rentals@morton.com.au](mailto:rentals@morton.com.au)

# 1105/157 Liverpool Street, Sydney



0 1 2 3 4 5  
SCALE (METRES)

PLANS SHOWN ONLY INDICATIVE OF LAYOUT. DIMENSIONS ARE APPROXIMATE.



The information above is provided in good faith and has been provide to us from a variety of sources. We have not verified who accurate and do not have any belief one way or other in its accuracy. We do not accept any responsibility to any person for it pass it on. All interested parties should rely on their own inquiries in order to determine whether or not this information is