



morton.

Sydney 1302/281 Elizabeth Street

 2  2  1

Two Bedroom Apartment With Stunning Hyde Park Views

- Located in the sought after Regency Hyde Park with breathtaking views over Hyde Park and Sydney Harbour glimpses
- Spacious, combined living/dining area leads out onto one of two balconies overlooking Hyde Park
- Two spacious bedrooms, both with views over Hyde Park, main with second connecting park side balcony and ensuite bathroom with bath
- Modern granite kitchen with stainless steel gas appliances
- Additional features include air con, internal laundry and one security car space
- Regency Hyde Park is a highly desirable residential building positioned on Elizabeth and Castlereagh Streets, opposite Hyde Park, with 24hr concierge, onsite building manager, indoor pool, spa and gymnasium
- Positioned moments to shops, restaurants, cafes and transport options and just short stroll to Town Hall, Pitt St Mall, Westfield, Darling Harbour, Surry Hills and East Sydney

View

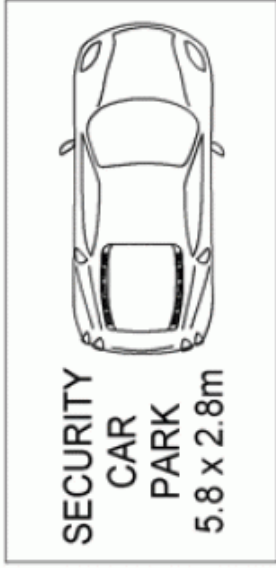
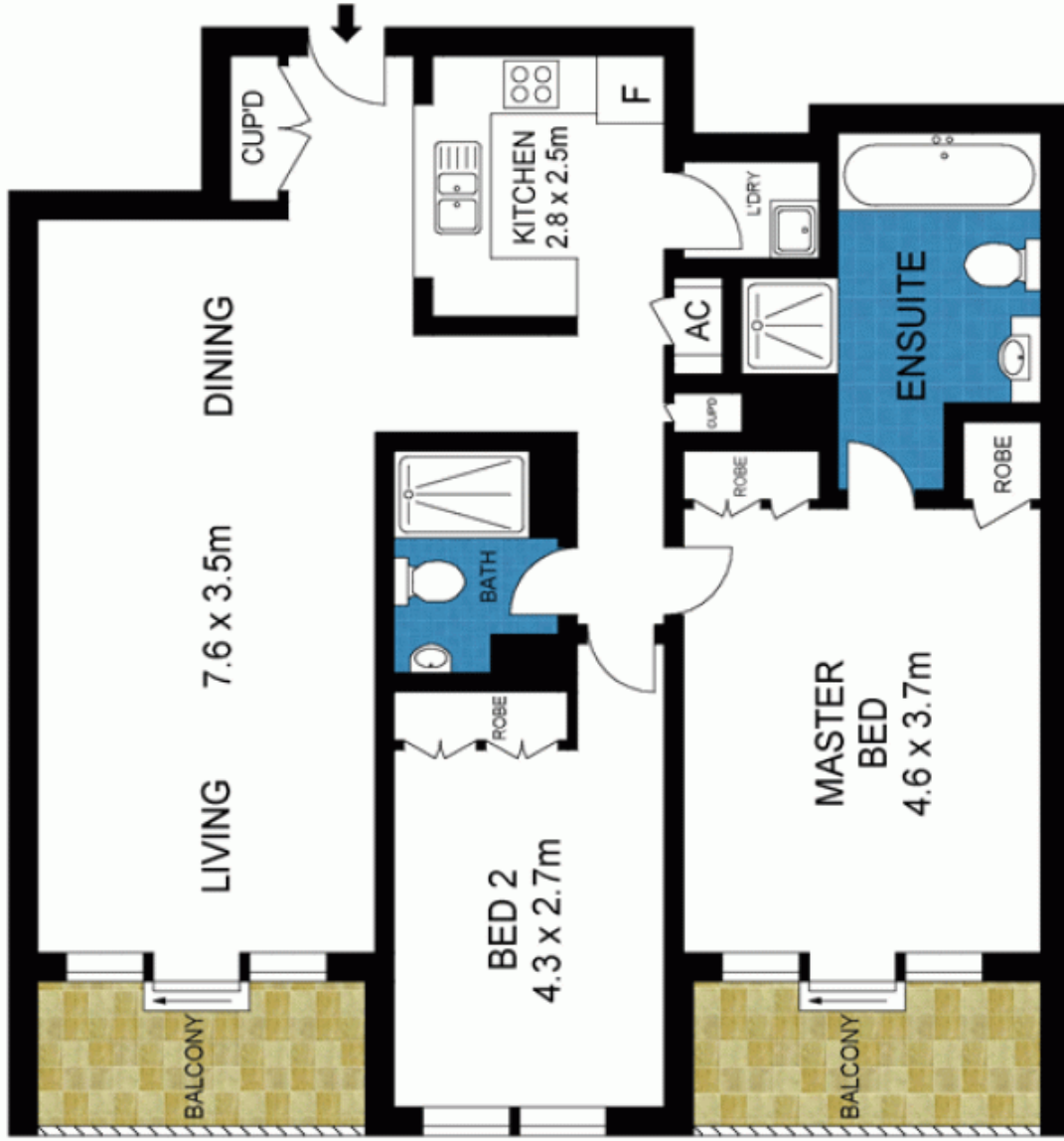
As advertised or by appointment

Agent

Morton RE

 [1302 281 281](tel:1302281281)
 rentals@morton.com.au

morton.com.au



THIRTEENTH FLOOR



INT : 94m²
EXT : 26m²



1302/281 Elizabeth Street, Sydney