



morton.

Sydney 3010/70 Market Street

 2  2  1

Located in the renowned 'Swissotel Sydney' and stylishly refurbished throughout this exceptional apartment defines a lifestyle of rare exclusivity. Bathed in afternoon light, stunning views stretch across the Queen Victoria Building to the distant peaks of the Blue Mountains.

- Immaculately refurbished throughout for ultra contemporary living
- Combined living and dining areas with connecting balcony offering stunning district views
- Spacious master bedroom with ensuite bathroom and built-in wardrobes
- Deluxe kitchen, with sleek granite benches, brand new cabinetry and Bosch gas stainless steel appliances
- 5 star resort facilities including concierge, outdoor heated pool, spa, and sun deck.
- Valet parking included and storage cage

View

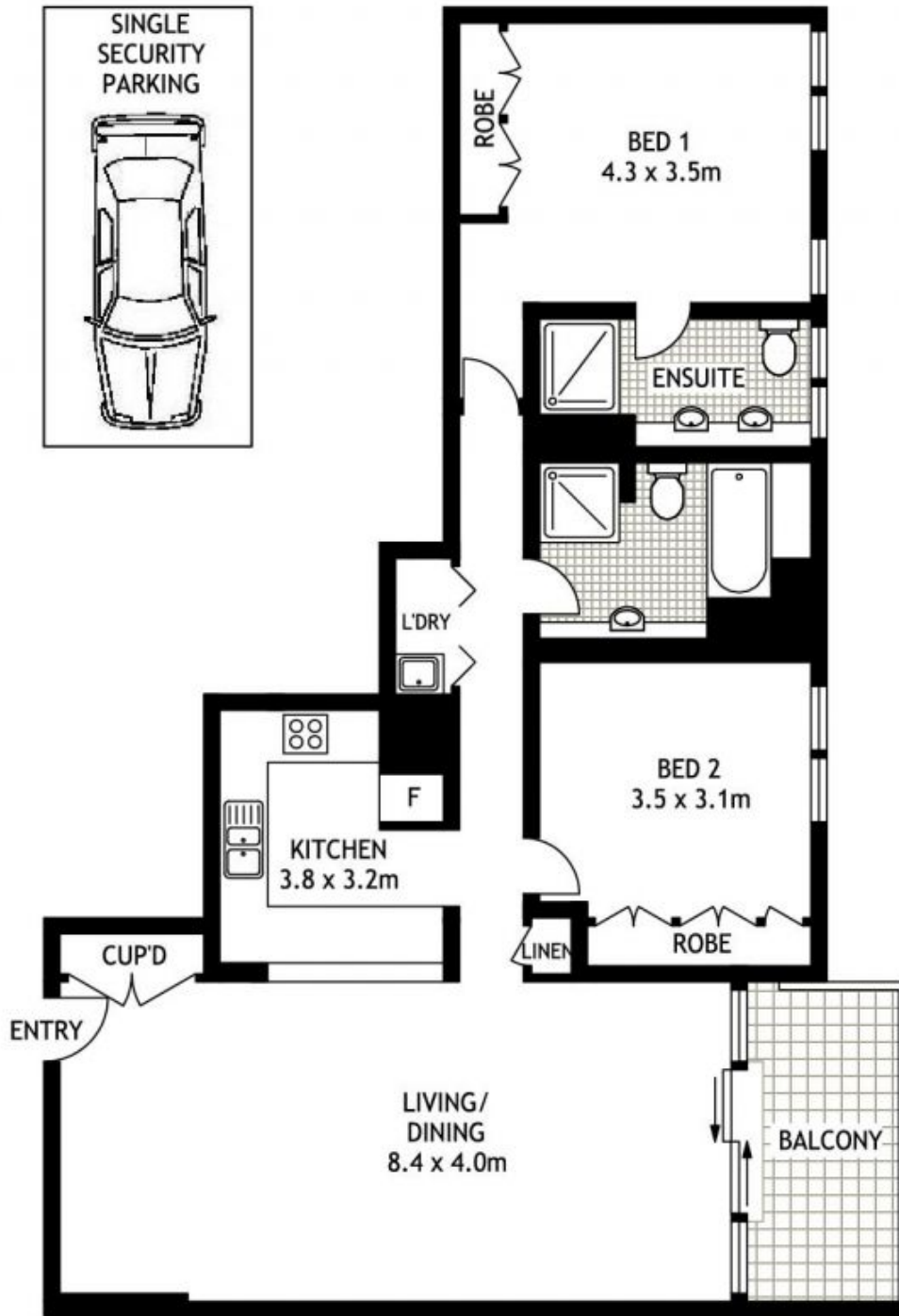
As advertised or by appointment

Agent

Morton RE

 [rentals@morton.com.au](tel:)
 rentals@morton.com.au

morton.com.au



THIRTIETH FLOOR



3010/70 MARKET STREET

SYDNEY

SCAPE Floor Planing Disclaimer: This floor plan is conceptual only. It is provided for illustrative purposes only and should not be relied upon. We make no guarantees to the correctness of this plan. All interested parties should make and rely on their own enquiries in determining the accuracy of the information contained in this floor plan.