



Approximate Outline Of Apartment



**morton.**

**PYRMONT** 56 Pirrama Road

 3  3  2

This apartment is nestled on the edge of Sydney Harbour and surrounded by waters edge with a stunning North facing aspect .

The apartment offers the finest of finishes and convenience to the city and an idyllic indoor / outdoor lifestyle. This prestigious apartment incorporates modern design, superb inclusions and generous floor space with a Sydney harbor back backdrop.

- Spacious layouts with alternative North West views
- Sun drenched open plan lounge / dining
- High ceilings open onto large balcony overlooking the water
- State of the art kitchen with European stainless steel appliances
- Marble island bench and chrome fridge / freezer
- Master bedrooms with walk through wardrobes
- Travertine / marble ensuite bathrooms
- Secure garage with underground parking and storage cage
- Marina berth available at further cost

**morton.com.au**

**View**

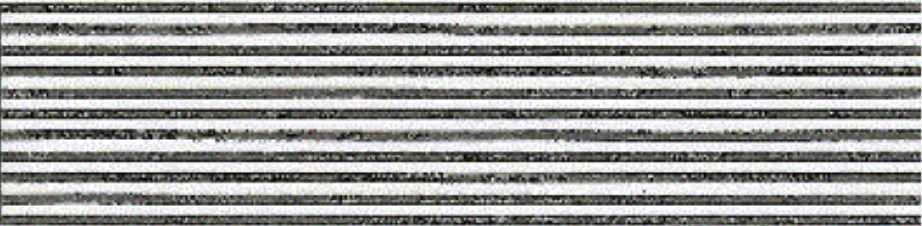
As advertised or by appointment

**Agent**

**Morton RE**

 [rentals@morton.com.au](tel:)





Wharf WVH-K  
PO Box 1047  
Queen Victoria Building  
Sydney NSW 1280  
T 1800 806 969  
F 61 2 8908 4040  
W [sydneywharf.net.au](http://sydneywharf.net.au)

# SYDNEY WHARF 9

## 9.1.50

SYDNEY WHARF 9  
PYRMONT BAY  
3 BEDROOM

- Living
- Dining
- Family
- Breakfast
- Bedroom 1
- Bedroom 2
- Bedroom 3

Note  
• Floor plans are drawn to  
• Floor sizes of Bedroom  
less of robe.

