



Approximate Outline Of Apartment



morton.

PYRMONT 56 Pirrama Road

 3  3  2

This apartment is nestled on the edge of Sydney Harbour and surrounded by waters edge with a stunning North facing aspect .The apartment offers the finest of finishes and convenience to the city and an idyllic indoor / outdoor lifestyle. This prestigious apartment incorporates modern design, superb inclusions and generous floor space with a Sydney Harbour backdrop.

- Spacious layouts with alternative North West views.
- Sun drenched open plan lounge / dining.
- High ceilings open onto large balcony overlooking the water.
- State of the art kitchen with European stainless steel appliances
- Marble island bench.
- Master bedrooms with walk through wardrobes.
- Travertine / marble ensuite bathrooms.
- Secure garage with underground parking and storage cage.
- Marina berth available at additional cost

View

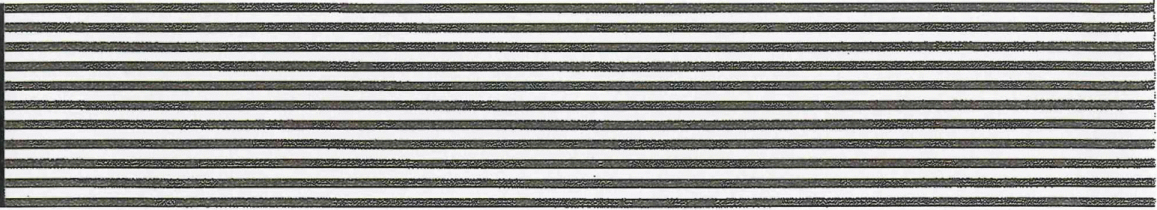
As advertised or by appointment

Agent

Morton RE

 [rentals@morton.com.au](tel:)

morton.com.au

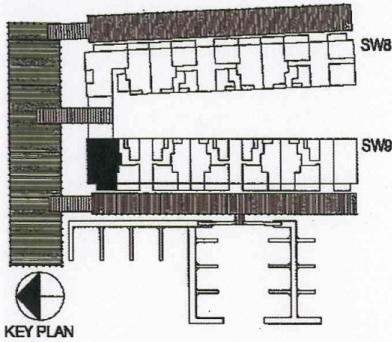


Wharf VIII+IX
 PO Box 1047
 Queen Victoria Building
 Sydney NSW 1230
 T 1800 805 959
 F 61 2 8908 4040
 W sydneywharf.net.au

SYDNEY WHARF 9

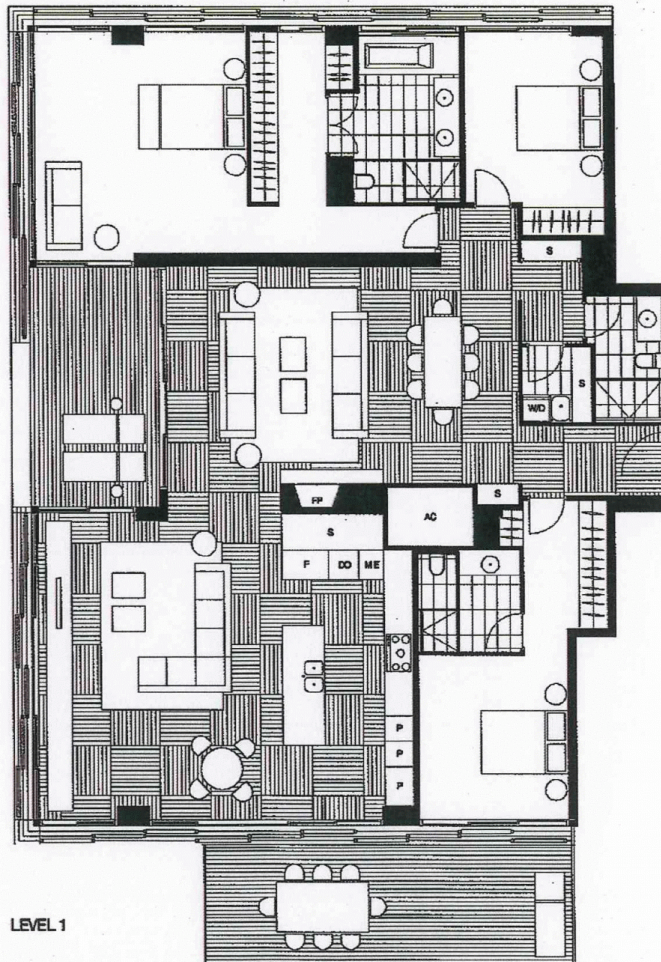
9.1.50

SYDNEY WHARF 9
 PYRMONT BAY
 3 BEDROOM



Living	4.7 x 5.1m
Dining	3.6 x 3.8m
Family	4.8 x 7.3m
Breakfast	3.4 x 2.5m
Bedroom 1	5.1 x 5.2m
Bedroom 2	3.5 x 3.9m
Bedroom 3	3.3 x 4.1m

Note:
 - Floor plans are drawn at an unspecified scale.
 - Room sizes of Bedrooms are taken to the front face of robe.



LEVEL 1

Disclaimer:
 This Layout Plan is a guide only and was prepared prior to completion of the project. This information contained herein is believed to be correct, however is not guaranteed. Dimensions are approximate. Changes will undoubtedly occur during the development, dimensions, areas, fittings, fixtures and specifications may be subject to change without notice in accordance with the provisions of the Contract for Sale. Balconies necessary for services are not depicted. The furniture depicted in the Layout Plan is not included in the sale. The position of the furniture should not be taken to indicate the final position of power points, TV connection points and the like. Floor finish set out is indicative only. Prospective purchasers must rely on their own enquiries.