




morton.

ZETLAND 315/17 Joynton Avenue

 1  1

Inspection times are available. To be notified of the inspection times via email or SMS (free of charge), simply submit an enquiry here with your contact details. Alternatively please search for the listing on our website <http://www.mortonandmorton.com.au/11043273> to book your own inspection online.

View

As advertised or by appointment

Agent

Morton



 info@morton.com.au

Wonderfully positioned in the bustling new precinct in Victoria Park, the famous 'Emerald Park' apartments provide a new level of living. This amazingly stylish one bedroom apartment offers split-level layout with spacious lounge downstairs and sun-drenched bedroom upstairs. The open plan living and dining areas flow out onto an oversized balcony with views. The unit features contemporary design and quality features.

- Integrated modern kitchen with stainless steel appliances
- Dishwasher, oven and gas cooking
- Built-in wardrobe in the bedroom
- Luxury bathroom with floor to ceiling tiles
- Polyurethane finish joinery with ample storage

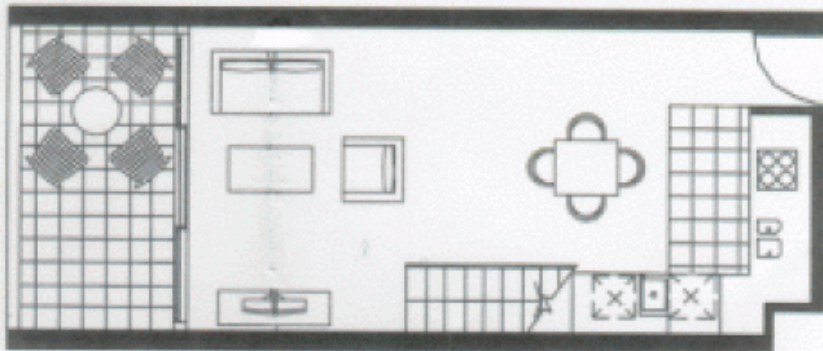
morton.com.au

Unit Number 3.15
1 Bedroom + Study Loft

Strata Area 68
Internal Area 60
External Area 8



Upper Level



Lower Level

13 Joynton Avenue, ZETLAND



Eton

Lateral
CORPORATION
PROPERTY DEVELOPMENT

13 JOYNTON AVENUE, ZETLAND, SA