



morton.

ZETLAND 105/1 George Julius Avenue

 2  2  1

** Please register for our inspections to be kept up to date with the property status. All available inspection times are automatically emailed to you by completing the online inquiry form, or "Book Inspection" directly at www.mortonandmorton.com.au/11595343

Located in the vibrant Victoria Park precinct, just 3km from the CBD, the new Platinum development by Payce is sophisticated urban living at its best. Platinum's five buildings surround a beautifully landscaped 1,930sqm elevated garden incorporating an alfresco dining and barbecue area, intimate pavilions for relaxing and an Asian-inspired bamboo grove.

- State of the art health club featuring pool, gymnasium, steam and massage rooms
- Stainless steel Miele appliances
- LED lighting throughout
- Stone bench tops, mirrored splash back
- Data/TV points in living and main bedroom
- Security building, Video intercom

morton.com.au

View

As advertised or by appointment

Agent

Morton RE



 rentals@morton.com.au



PLATINUM

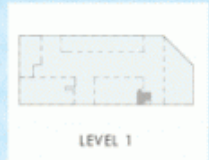
BY PAYCE

APARTMENT

105

2 BEDROOM

INTERNAL	79 SQM
EXTERNAL	28 SQM
TOTAL	107 SQM



PROUDLY DEVELOPED BY:



1300 778 777
 platinumbypayce.com.au



Disclaimer: This floor plan has been prepared for marketing purposes only. All descriptions, dimensions, depictions and other details in this floor plan may not be to scale and may vary to the property as built. No third party has any authority to make or give any representation or warranty in relation to the property. Your attention is drawn to the special conditions of the contract for sale. Date Issued: 14/09/12 Revision: E