



# morton.

**LITTLE BAY** 307/26 Harvey Street

 1  1  1

Be one of the first to live in the transformed Prince Henry redevelopment at Little Bay, located opposite peaceful parklands and neighboring bushlands. Only a few minutes walk from Little Bay beach is the Greenview Building, the newest addition to Coastal Quarter. Boasting park views and an abundance of natural light, this flowing open plan apartment is equipped with top of the line fittings and inclusions.

- Wool carpet in bedroom
- Generous balcony ideal for entertaining or taking in the view
- Kitchen features stainless steel appliances and stone bench tops
- Internal laundry includes Fisher & Paykel dryer and laundry tub

### View

As advertised or by appointment

### Agent

**George Reale**

 0408 014 469

 [george@morton.com.au](mailto:george@morton.com.au)

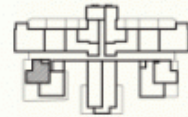
[morton.com.au](http://morton.com.au)

COASTAL QUARTER  
B-207  
PRINCE HENRY AT LITTLE BAY

|                  |           |
|------------------|-----------|
| Bedrooms         | 3 + Media |
| Bathrooms        | 2.5       |
| Basement Parking | 2         |

|               |         |
|---------------|---------|
| Internal Area | 128 sqm |
| External Area | 33 sqm  |

|                   |                |
|-------------------|----------------|
| <b>TOTAL AREA</b> | <b>161 sqm</b> |
|-------------------|----------------|



Contact  
(02) 9256 5968  
[www.princehenrylittlebay.com.au](http://www.princehenrylittlebay.com.au)



**A BROOKFIELD  
RESIDENTIAL PROPERTY**

Disclaimer: While the information on this panel has been carefully compiled and is correct at the time of publication (August 2012), the information and illustrations are indicative only and may be subject to change. Brookfield Residential Properties, companies related to it and its agents do not warrant the accuracy of the information or illustrations and do not accept any liability for any error or discrepancy in that information. Interested parties should under take independent enquiries and investigations to satisfy themselves that any details herein are true and correct. The information and illustrations displayed on this panel will not form part of any contract of sale.



Level 2



Level 3

