



morton.

ZETLAND 827/2B Defries Avenue

 1  1  1

Located in the hub of Victoria Park, East Village offers resort-style apartment living with the largest private Sky Park in Sydney and instant access to a lively marketplace below and just 3kms to the CBD.

- Reverse cycle air conditioning
- Stainless steel Smeg appliances
- Soft close kitchen draws and cupboards
- Stone bench tops, mirror splash back
- LED under cupboard lighting
- Wool carpets, efficient LED down lights
- Gas bayonet to balcony for your BBQ
- Data/TV points in living and main bedroom
- Recessed mirrored cabinets in bathroom
- Security building, video intercom

View

As advertised or by appointment

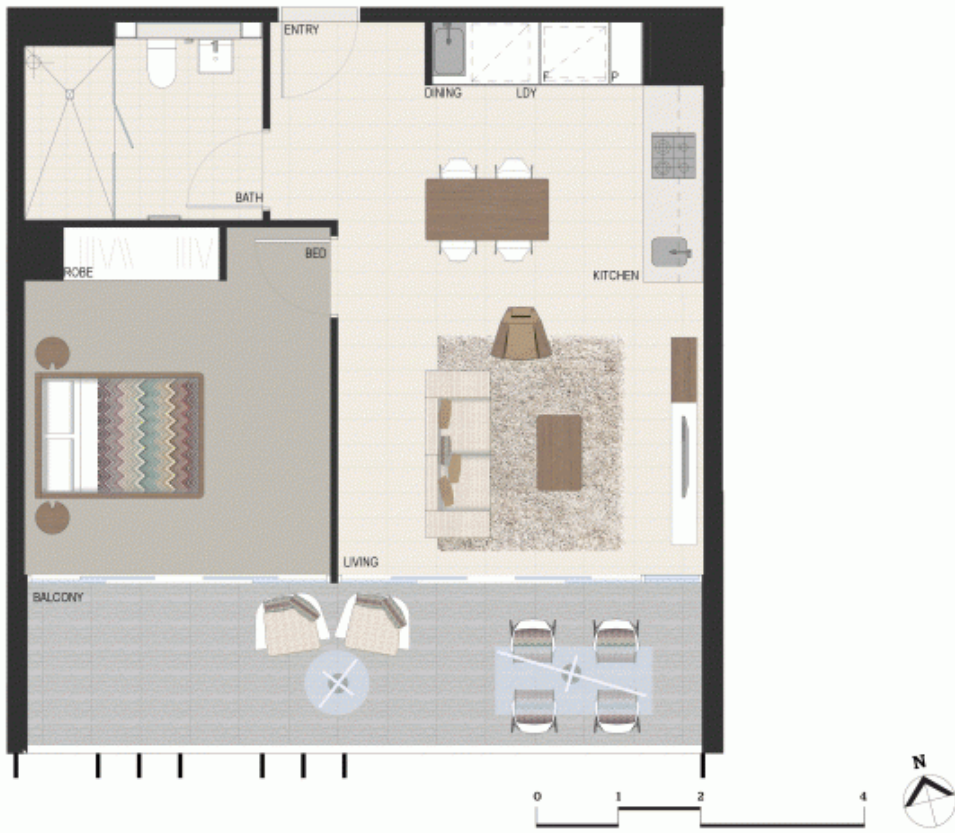
Agent

Morton RE



 rentals@morton.com.au

morton.com.au



827 1 bed
1 bath + storage
1 parking

Internal	54sqm
External	16sqm
Total	70sqm



Proudly developed by
PAYCE

eastvillage.com.au
1800 888 688

Disclaimer: This floor plan has been prepared for marketing purposes only. All descriptions, dimensions, depictions and other details in this floor plan may not be to scale and may vary to the property as built. No third party has any authority to make or give any representation or warranty in relation to the property. Your attention is drawn to the special conditions of the contract for sale. **Insud 260412**