



# morton.

**SYDNEY** SYDNEY

 2  3  1

\*\*\*Inspection times are available. To be notified of the inspection times via email or SMS (free of charge), simply submit an enquiry here with your contact details. Alternatively please search for the listing on our website <http://www.mortonandmorton.com.au/7498683> to book your own inspection online.\*\*\*

### View

As advertised or by appointment

### Agent

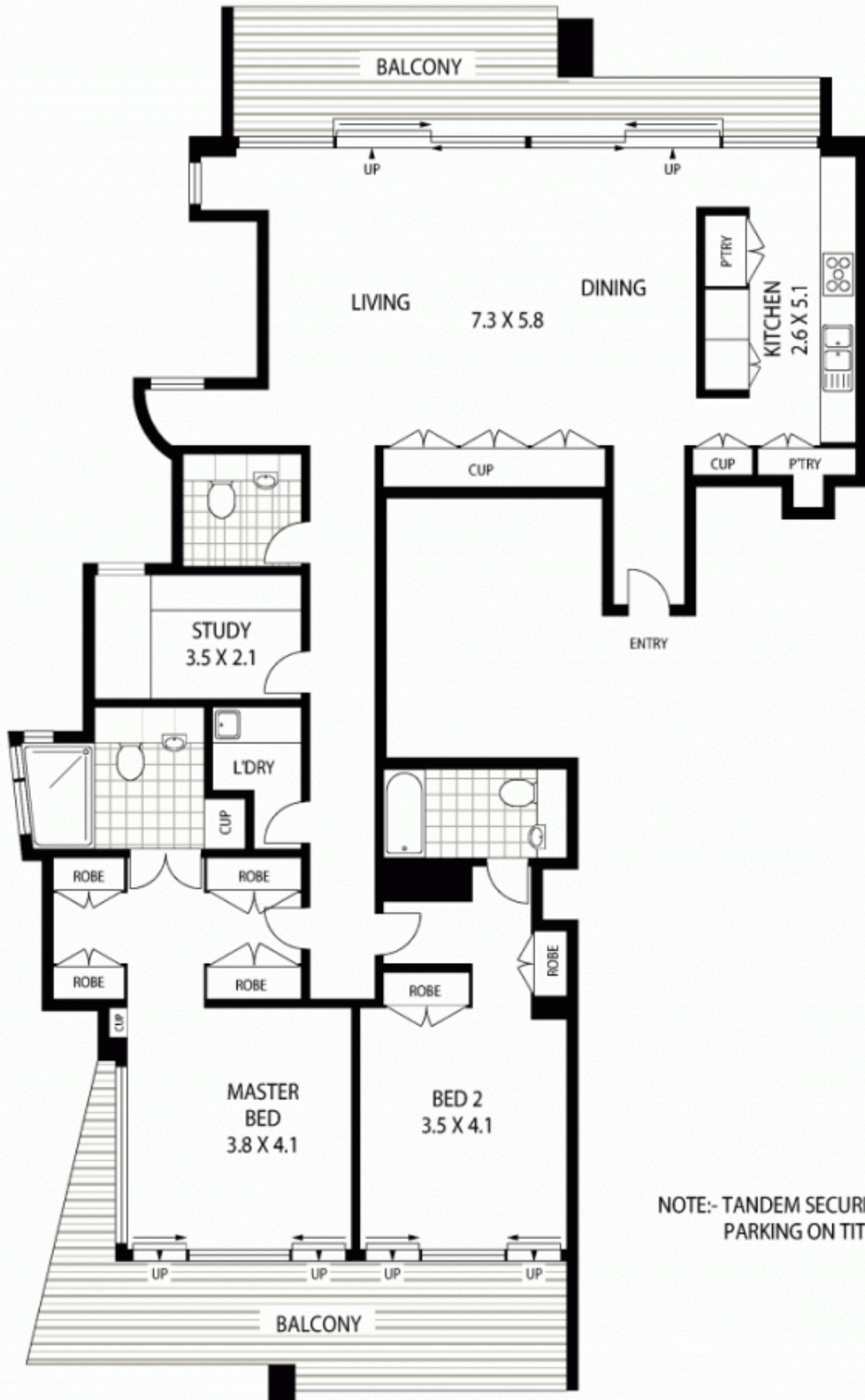
**Morton RE**

   
 [rentals@morton.com.au](mailto:rentals@morton.com.au)

Commanding sublime views across Sydney to the tops of the Blue Mountains, this executive address is your luxurious city escape, right in the heart of the CBD. Vast expanses of glass unite beautifully appointed and spacious living areas with balconies on both sides making this is an indoor/outdoor lifestyle without parallel.

- High in the sky on the 22nd floor
- Two entertainers' balconies with Harbour Bridge views
- Spacious, open-plan indoor/outdoor entertaining
- Granite kitchen with miele gas/electric appliances
- Plenty of storage space throughout
- Two large beds with ensuites and balcony access

[morton.com.au](http://morton.com.au)



NOTE:- TANDEM SECURITY PARKING ON TITLE

**TWENTY SECOND FLOOR**



**228/159 KENT STREET**

**SYDNEY**

**SCAPE Floor Planning Disclaimer:** This floor plan is conceptual only. It is provided for illustrative purposes only and should not be relied upon. We make no guarantee as to the correctness of this plan. All interested parties should make and rely on their own enquiries in determining the accuracy of the information contained in this floor plan.