



morton.

PYRMONT PYRMONT

 3  4  2

Located on Darling Island peninsula, this north facing unfurnished premier penthouse apartment enjoys spectacular harbour views. With extensive use of floor to ceiling glass, the clever design allows for abundant natural light and uninterrupted views across the water to the Harbour Bridge and city.

- Grand open plan formal and informal living areas
- Soaring ceilings
- 100 square metre wrap around outdoor terrace
- Terrace with glass balustrades and automatic shade screens
- Designer kitchen with Miele stainless steel appliances
- Dishwasher, built-in coffee machine and wine storage unit
- European limestone on floors and walls in living and bathrooms
- Large master bedroom with private media room and balcony
- Ample walk-through wardrobe
- Beautifully appointed ensuite with spa bath
- Separate oversized rimless shower recess
- Second and third bedrooms are equally generous in size

morton.com.au

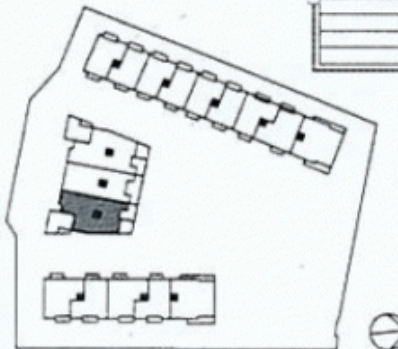
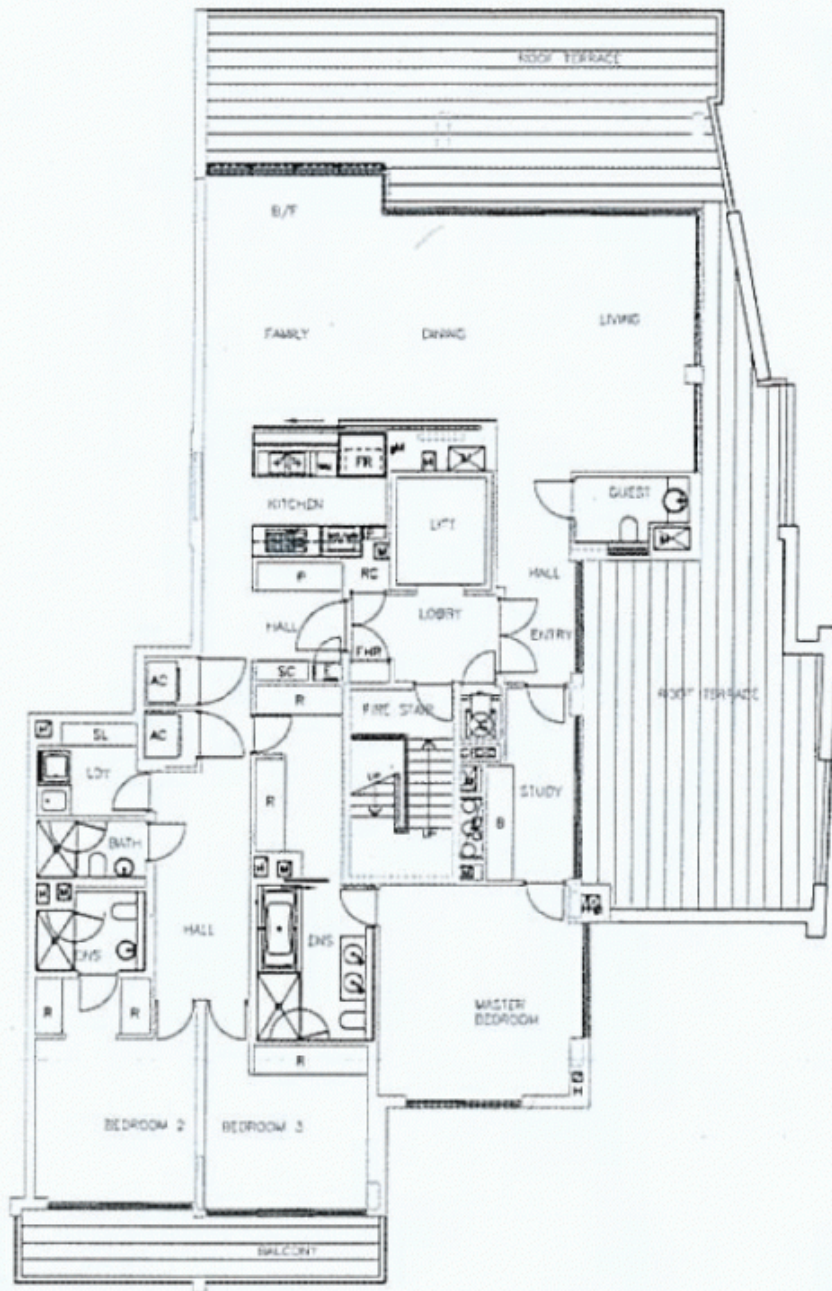
View

As advertised or by appointment

Agent

Morton RE

 [rentals@morton.com.au](tel:)



Apartment: B1-L6-03

