



morton.

PYRMONT PYRMONT

 2  2  2

Located on Sydney's last residential wharf development "Sydney Wharf" this exceptional apartment is literally on the waters edge.

Boasting superb appointments, soaring ceilings and open plan design with the city and harbour front parkland at your finger tips.

Open plan sun drenched lounge and dining with black butt timber floors leads to entertainers balcony overlooking the the harbour.

State of the art kitchen with ample stone benchtops, European stainless steel Miele appliances including dishwasher and excellent cupboard space.

Private master bedroom suite with marble / travertine ensuite and walk-in wardorbes. Equally spacious second bedroom is completely separated from master, enjoys alternative views & aspect with built-ins. Full study with adjacent storage ideally

View

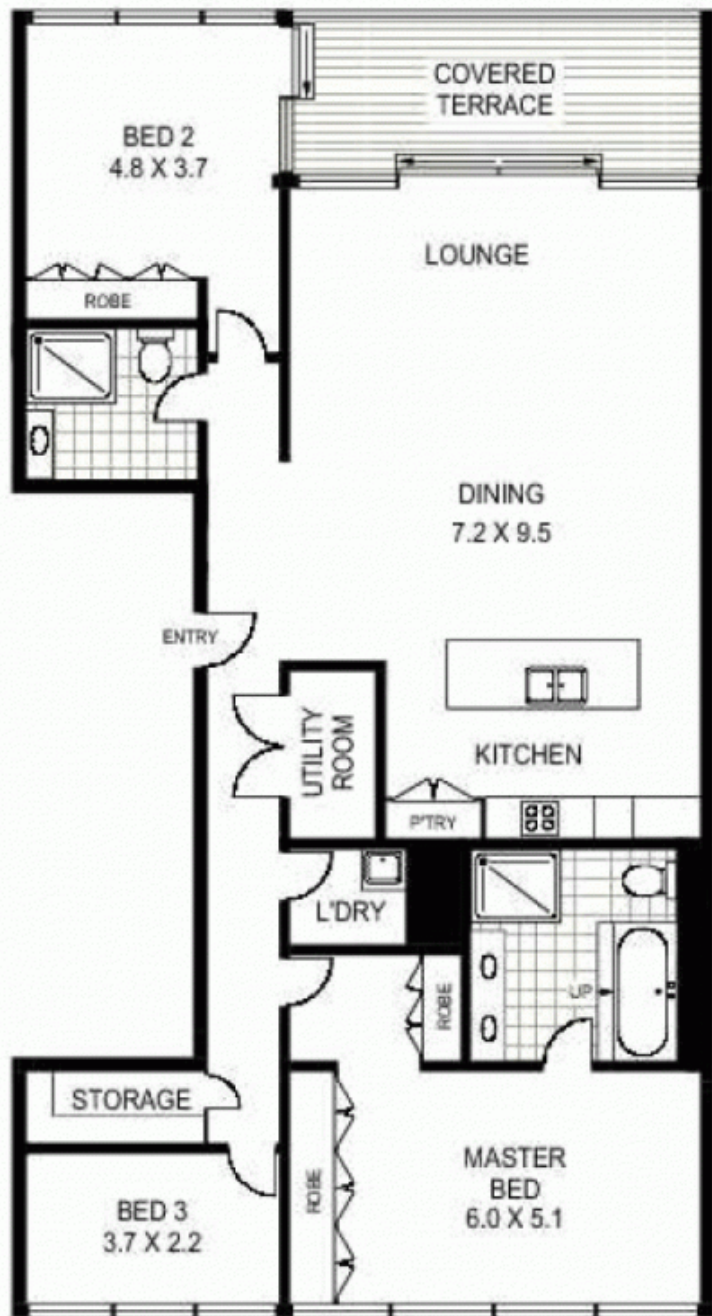
As advertised or by appointment

Agent

Morton

  info@morton.com.au

morton.com.au



LEVEL THREE



11/56 PIRRAMA ROAD

PYRMONT

Floor Plan Disclaimer: Mind the Gap (mtg) floor plans / site plans are intended as a guide only. No representations or warranties of any nature whatsoever are given or intended and any person using this information should always rely on their own enquiries. mtg property marketing services - 1300 133 145 - photography, floor plans, virtual tours, video tours, copywriting, project marketing - www.mindthegap.com.au