



morton.

Bondi Junction 1506/588 Oxford Street

 2  2

Held within the highly sought after building "Vue" at Bondi Junction on level 15, this magnificent apartment boasts stunning views NE across Sydney Harbour, The Opera House, City Skyline and Harbour Bridge and scenic views towards the Pacific Ocean. With a massive 102sqm of living space, this exclusive and impressive apartment is luxury living at its finest.

View

As advertised or by appointment

Agent

Morton



 info@morton.com.au

- Car space available at higher rent
- Master with walk-in wardrobe, ensuite featuring dual basins and "penthouse style" bathtub
- Double bedrooms also with built-in wardrobes
- Massive balcony flowing off living/dining areas, perfect for entertaining
- Well-appointed kitchen with tiled floor and modern appliances (integrated fridge included)
- Expansive tiled living area
- Internal laundry including dryer
- Storage cage

morton.com.au

**Apartment 1506
Level 15**

570-588 Oxford Street
Bondi Junction NSW 2022

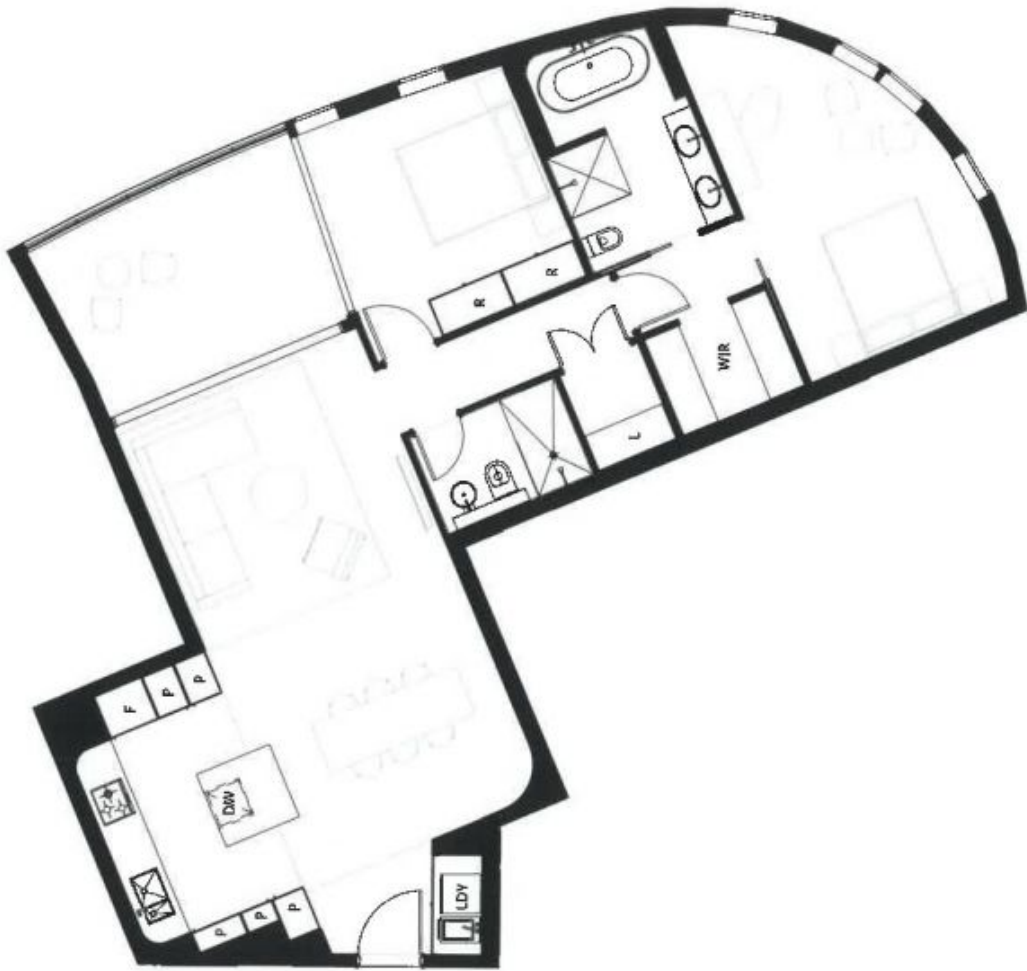


- > 2 bedroom
- > 2 bathroom
- > 1 parking

Internal	202.9 m ²
Balcony	13.2 m ²
Basement store	3.5 m ²
Total	219.6 m²



Call 1800 332 118 vuebondi.com.au



Legend:

- DW DISHWASHER
- F REFRIGERATOR
- L LINEN CUPBOARD
- LDY LAUNDRY
- P PANTRY
- R BUILT IN ROBE
- WIR WALK IN ROBE

Scale: 0 1 2 3 4 5M

DISCLAIMER: Please note that this floor plan was produced prior to completion. The information, while correct at time of printing, is not guaranteed. All dimensions and areas are measured to the centre of party walls and are approximations only which may vary from final strata areas. The finishes and fittings schedule should be read in conjunction with this document. In accordance with the Contract of Sale, changes without notice may be made during construction. No furniture is included with any sale.