



# morton.

Little Bay 7/2 Gull Street

 1  1  1

The newly transformed Prince Henry redevelopment at Little Bay is located opposite peaceful parklands and neighbouring bushlands. Only a few minute's walk from Little Bay beach is Coastal Quarter, this distinctive building stylishly brings together the rich art-deco designs and classic elegance of the past with contemporary new spaces and stunning timeless finishes.

- Wool carpet in bedroom and tiles in dining and kitchen areas
- Generous balcony ideal for entertaining or taking in the view
- Kitchen features AEG appliances and stone bench tops
- Internal laundry includes Fisher & Paykel dryer
- Built in wardrobes

#### View

As advertised or by appointment

#### Agent

**Morton RE**



 [rentals@morton.com.au](mailto:rentals@morton.com.au)

[morton.com.au](http://morton.com.au)



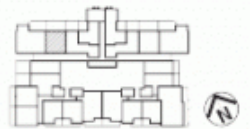
Floor Plan



COASTAL QUARTER  
S-G07  
PRINCE HENRY AT LITTLE BAY

Bedrooms	1 + Study
Bathrooms	1
Basement Parking	1

Internal Area	65 sqm
External Area	26 sqm
<b>TOTAL AREA</b>	<b>91 sqm</b>



Contact  
(02) 9256 5968  
[www.princehenrylittlebay.com.au](http://www.princehenrylittlebay.com.au)



*Prince Henry*  
AT LITTLE BAY

A BROOKFIELD  
RESIDENTIAL PROPERTY

Disclaimer: Whilst the information on this plan has been carefully compiled and is correct at the time of publication (October 2015), the information and illustrations are indicative only and may be subject to change. Brookfield Residential Properties, its agents and its staff do not warrant the accuracy of the information or illustrations and do not accept any liability for any error or discrepancy in that information. Interested parties should make their own independent enquiries and investigations to verify themselves that any details herein are true and correct. The information and illustrations appearing on this plan will not be part of any contract of sale.