



# morton.

**Bondi Junction** 1604/253 Oxford Street

 2  2  1

Located in the hub of Bondi Junction, Capitol offers resort-style apartment living with a private rooftop entertainment area and easy access to a lively Westfield, bus/train interchange and Bondi Beach.

- Reverse cycle air conditioning
- Stainless steel appliances
- Soft close kitchen draws and cupboards
- Stone bench tops, mirror splash back
- LED under cupboard lighting
- Timber floors, efficient LED down lights
- Data/TV points in living and main bedroom
- Recessed mirrored cabinets in bathroom
- Security building, video intercom
- Large storage cage
- NBN ready building
- Sunny north east aspect
- Onsite building manager
- Near new building
- Facing a quiet street

### View

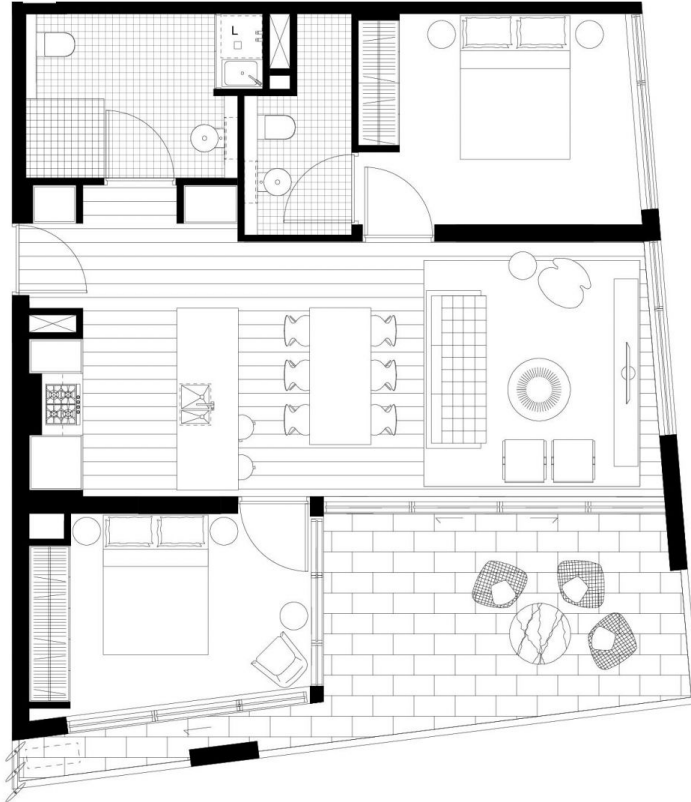
As advertised or by appointment

### Agent

**Morton RE**

 [rentals@morton.com.au](tel:)

[morton.com.au](http://morton.com.au)



Disclaimer: This plan is guide only and does constitute an offer or contract. Please note changes may be made during the development and areas, fittings, fixtures and specifications are subject to change without notice in accordance with the terms of the contract of sale. All parties must rely on their own investigation to validate this information as it is not guaranteed. No liability will be accepted for any inaccuracy/misstatement.

**CAPITOL**  
BONDI JUNCTION

**LEVEL 15-19**

APT 15.04, 16.04, 17.04, 18.04, 19.04

**2 BED**

Internal area	75sqm
External area	18sqm
<b>Total</b>	<b>93sqm</b>

[www.capitolbondi.com.au](http://www.capitolbondi.com.au)  
**1800 66 33 95**