



# morton.

**Bondi Junction** 1105/253 Oxford Street

 1  1  1

Located in the hub of Bondi Junction, Capitol offers resort-style apartment living with a private rooftop entertainment area and easy access to a lively Westfield, bus/train interchange and Bondi Beach.

- Reverse cycle air conditioning
- Stainless steel appliances
- Soft close kitchen draws and cupboards
- Stone bench tops, mirror splash back
- LED under cupboard lighting
- Timber floors, efficient LED down lights
- Data/TV points in living and main bedroom
- Recessed mirrored cabinets in bathroom
- Security building, video intercom

### View

As advertised or by appointment

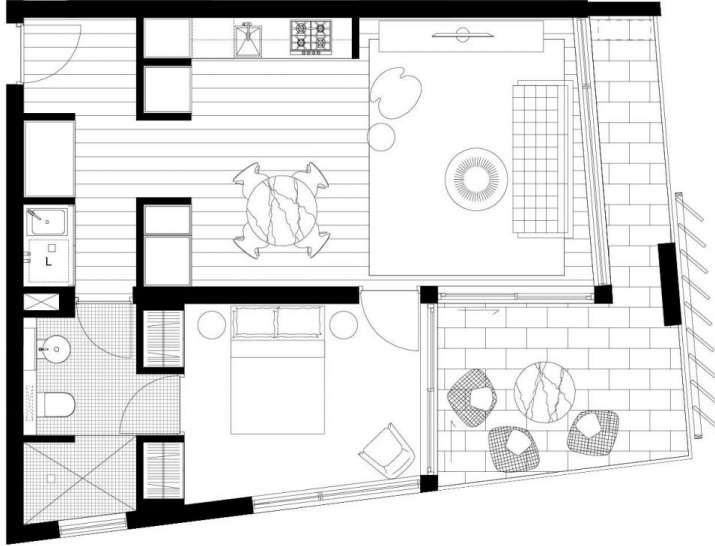
### Agent

**Morton RE**




 rentals@morton.com.au


[morton.com.au](http://morton.com.au)



Disclaimer: This plan is guide only and does constitute an offer or contract. Please note charges may be made during the development and areas, fittings, fixtures and specifications are subject to change without notice in accordance with the terms of the contract of sale. All parties must rely on their own investigation to validate this information as it is not guaranteed. No liability will be accepted for any inaccuracy/misstatement.



**CAPITOL**  
BONDI JUNCTION




**LEVEL 5-14**

**APT 5.04, 6.05, 7.05, 8.05, 9.05, 10.05, 11.05  
12.05, 13.05, 14.05**

**1 BED**

Internal area	50sqm
External area	13sqm
<b>Total</b>	<b>63sqm</b>



[www.capitolbondi.com.au](http://www.capitolbondi.com.au)  
**1800 66 33 95**

