



# morton.

**Surry Hills** 34/492-500 Elizabeth Street

 1  1  1

Featuring an exceptional floorplan which places a premium on indoor/outdoor living, this generous one bedroom courtyard apartment is well positioned at the rear of the highly sort after 'Tudor Gardens'. The apartment features a double bedroom (with built-ins), upgraded bathroom and modern kitchen with European appliances, and open plan living/dining flowing through to your own private courtyard - perfect for outdoor entertaining.

- Unique and private with east facing courtyard
- Generous proportions and an intelligent floor plan
- Tastefully updated with a superb use of space
- Brilliant kitchen with stone bench tops
- Modern bathroom with tub
- Lock-up garage as well as space for storage all on separate title
- Shops, parks, eateries and transport on your doorstep
- Intelligent investment or ideal inner-city pad
- Reverse cycle air-con; security building

### View

As advertised or by appointment

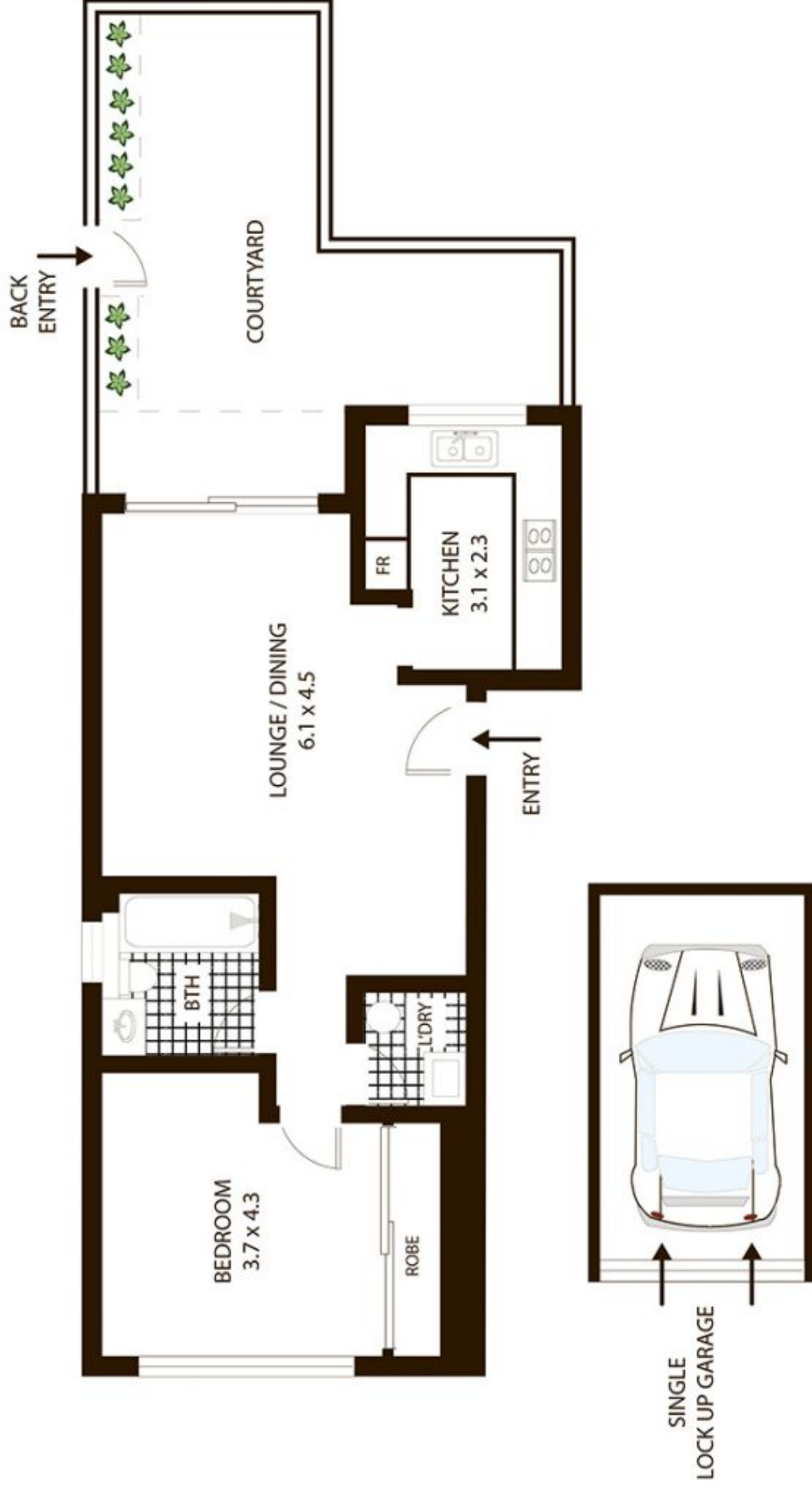
### Agent

#### George Reale

 0408 014 469

 [george@morton.com.au](mailto:george@morton.com.au)

[morton.com.au](http://morton.com.au)



# 34/492-500 Elizabeth St, Surry Hills



All measurements are approximate only. Plan is provided as an indication of layout