



morton.

Bondi Junction 1504/588 Oxford Street

 1  1  1

Set within the brand new "Vue" building', this sensational executive apartment is located on level 15 in the most impressive development to grace an exclusive stunning view towards Sydney Harbour.

- Vast open-plan living flows seamlessly to generous balcony
- Large separate study space
- Generous bedroom with extensive built-in robes
- Tiled floor throughout entertaining areas
- Stylish kitchen with modern appliances and island bench top (integrated fridge included)
- Luxurious bathroom
- Internal laundry, air conditioning throughout and exemplary finishes
- One car space
- Metres to Bondi Junction Westfield and bus/train interchange
- Storage cage
- NBN ready
- Communal pool and garden

View

As advertised or by appointment

Agent

George Reale

 0408 014 469

 george@morton.com.au

morton.com.au

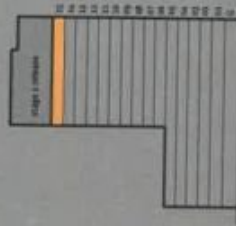
Apartment 1504 Level 15

570-588 Oxford Street
Bondi Junction NSW 2022



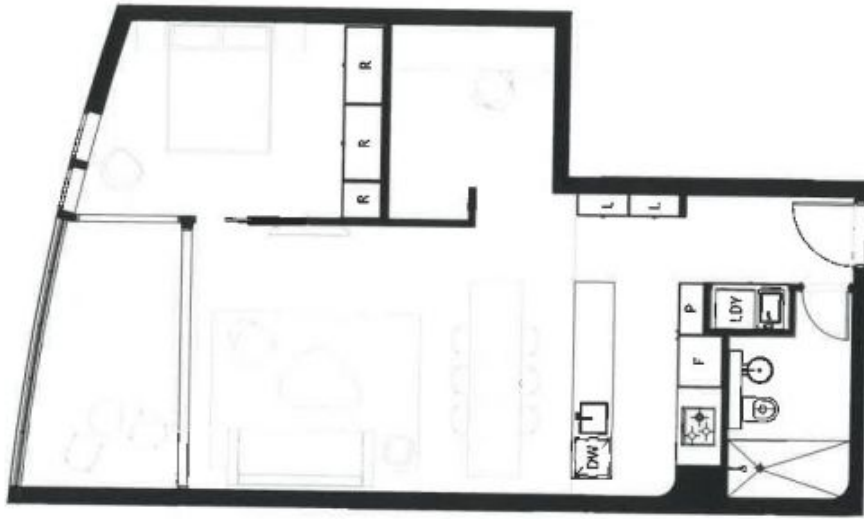
- > 1 bedroom
- > 1 bathroom
- > 1 parking

Interiral	57.0 m ²
Balcony	5.6 m ²
Basement store	3.5 m ²
Total	70.2 m²



Call 1800 332 118

vue.bondi.com.au



DISCLAIMER: Please note that this floor plan was produced prior to completion. The information, while correct at time of printing is not guaranteed. All dimensions and areas are measured to the centre of party walls and are approximations only which may vary from final strata areas. The finishes and fittings schedule should be read in conjunction with this document. In accordance with the Contract of Sale, changes without notice may be made during construction. No furniture is included with any sale.

