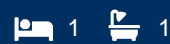




morton.

Zetland 913/1 Hutchinson Walk



Located in the vibrant Victoria Park precinct, just 3km from the CBD, the Platinum development by Payce is sophisticated urban living at its best. Platinum's five buildings surround a beautifully landscaped 1,930sqm elevated garden incorporating an alfresco dining and barbecue area, intimate pavilions for relaxing and an Asian-inspired bamboo grove.

- State of the art health club featuring pool, gymnasium, steam and massage rooms
- Stainless steel Miele appliances
- LED lighting throughout
- Stone bench tops, mirrored splash back
- Data/TV points in living and main bedroom
- Security building, Video intercom
- Air conditioning throughout

View

As advertised or by appointment

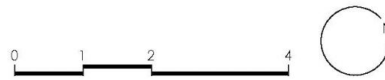
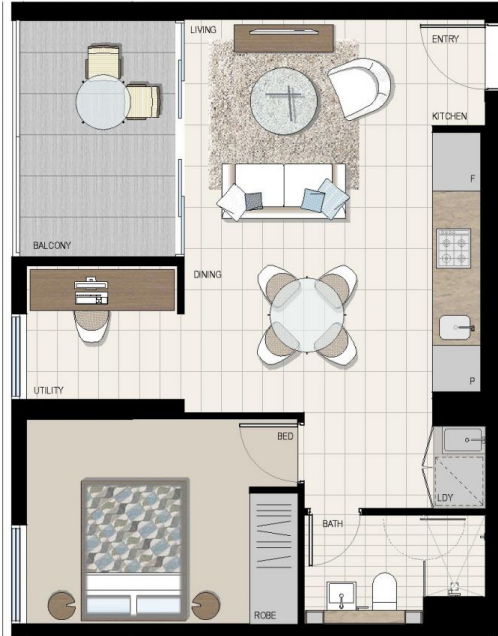
Agent

Morton RE




rentals@morton.com.au

morton.com.au

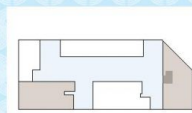



Disclaimer: This floor plan has been prepared for marketing purposes only. All descriptions, dimensions, depictions and other details in this floor plan may not be to scale and may vary to the property as built. No third party has any authority to make or give any representation or warranty in relation to the property. Your attention is drawn to the special conditions of the contract for sale. **Date Issued: 04/10/12 Revision: D**


PLATINUM
 BY PAYCE

APARTMENT
913
 1 BEDROOM

INTERNAL 50 SQM
 EXTERNAL 7 SQM
TOTAL 57 SQM


 LEVEL 9

PROUDLY DEVELOPED BY

1300 778 777
platinumbypayce.com.au