



# morton.

**Zetland** 802/2 Victoria Park Parade

3 2 1

Wonderfully positioned in the bustling new precinct in Victoria Park, the recently completed 'Stella' apartments will provide a new level of living. 'Stella' is superbly designed by Tzannes Associates to maximise light, open spaces and cross-flow ventilation.

- Ducted air conditioning
- Floating timber floors throughout
- Kitchens include CaesarStone bench tops and Miele appliances
- Polyurethane finish joinery with ample storage
- Video intercom and caged storage
- Bathrooms with Italian fittings, and
- Feature wall tiles and mirrored storage cabinets
- Curtains throughout
- Huge balcony (approx 100 sqm)

### View

As advertised or by appointment

### Agent

**Morton RE**



rentals@morton.com.au

[morton.com.au](http://morton.com.au)

# STELLA

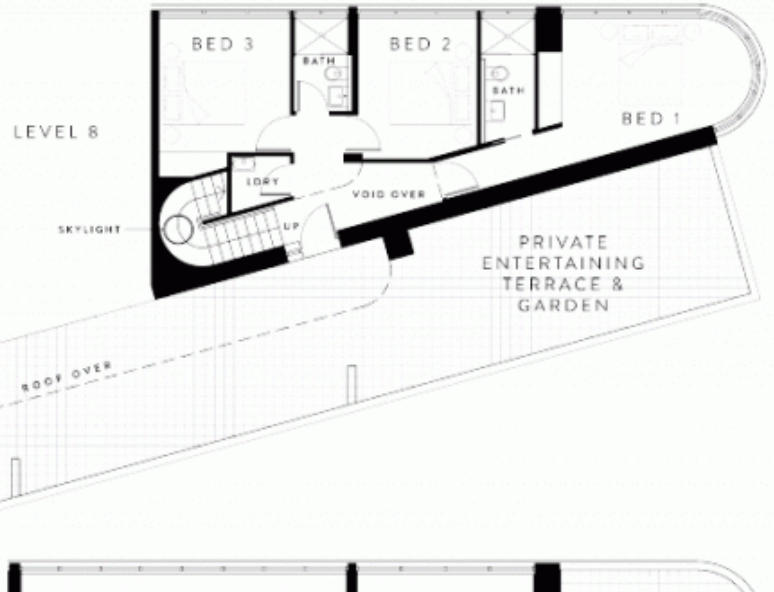
2 Victoria Park Parade  
Victoria Park, Zetland

Notes: Plans are based on the site plan provided for the use of the site. The design and construction of the building is subject to the approval of the relevant authorities. The dimensions are approximate and subject to change. The site plan is for information only and does not constitute a contract. The site plan is for information only and does not constitute a contract.

## APARTMENT 802 – LOT 70

Internal: 118 sqm  
External: 108 sqm  
Total: 226 sqm  
Carspaces: 2 T + 1  
Storage in basement

LIFT LOBBY  
ACCESS 801 & 802 ONLY



LEVEL 9

