



morton.

Little Bay 1/10 Darwin Avenue

 1  1  1

Located just 20 minutes from the Sydney CBD and literally five minutes stroll to the sand of Little Bay Beach, the Prince Henry Hospital development comprises a unique collection of superbly restored landmark heritage buildings. This private, spacious one bedroom single storey apartment features high ceilings, grand windows and stunning colonnaded outdoor entertaining spaces.

- Soaring four metre high ceilings and original features throughout
- Grand windows maximising light and airflow
- Huge colonnaded private outdoor entertaining areas
- Beautiful, relaxing lounge area opening onto outdoor patio
- Separate kitchen with high end appliances
- One bright bedroom with built in robe and woolen carpet
- Large stylish bathroom
- Internal laundry
- Open air car space
- Huge 27 sqm secure basement storage area

View

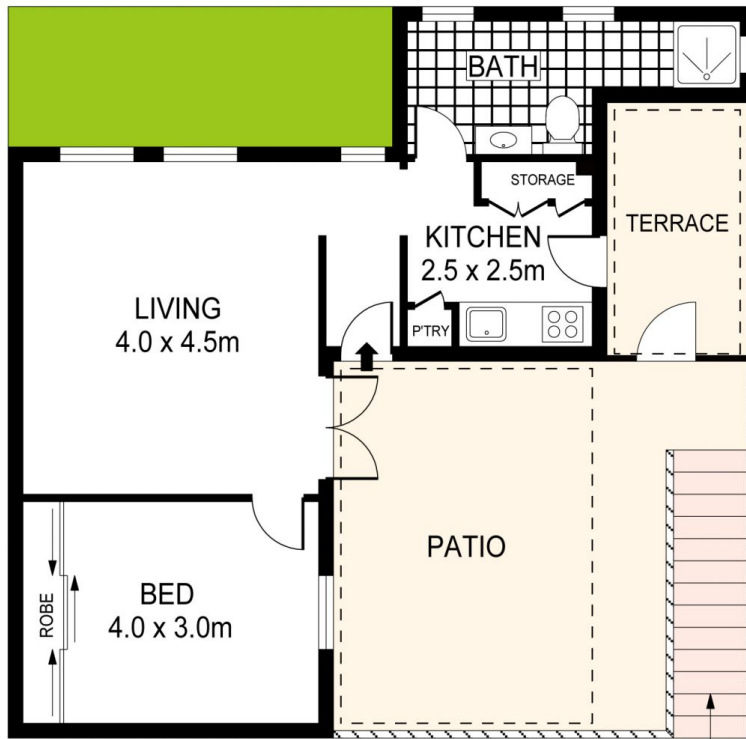
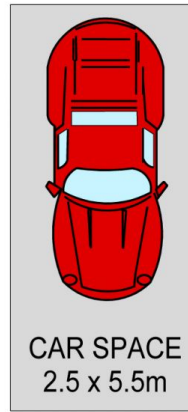
As advertised or by appointment

Agent

Morton

 [02 9550 0600](tel:0295500600)
 info@morton.com.au

morton.com.au



GROUND LEVEL



PLANS SHOWN ONLY INDICATIVE OF LAYOUT. DIMENSIONS ARE APPROXIMATE.
Ref. No: 36814

