



# morton.

**Zetland** 501/2 Victoria Park Parade

 2  2  1

Wonderfully positioned in the bustling new precinct in Victoria Park, the recently completed 'Stella' apartments is providing a new level of living. 'Stella' is superbly designed by Tzannes Associates to maximise light, open spaces and cross-flow ventilation.

- Floating timber floors throughout
- Kitchens include CaesarStone bench tops and Miele appliances
- Polyurethane finish joinery with ample storage
- Bathrooms with Italian fittings, and
- Feature wall tiles and mirrored storage cabinets
- Includes caged storage and video intercom

### View

As advertised or by appointment

### Agent

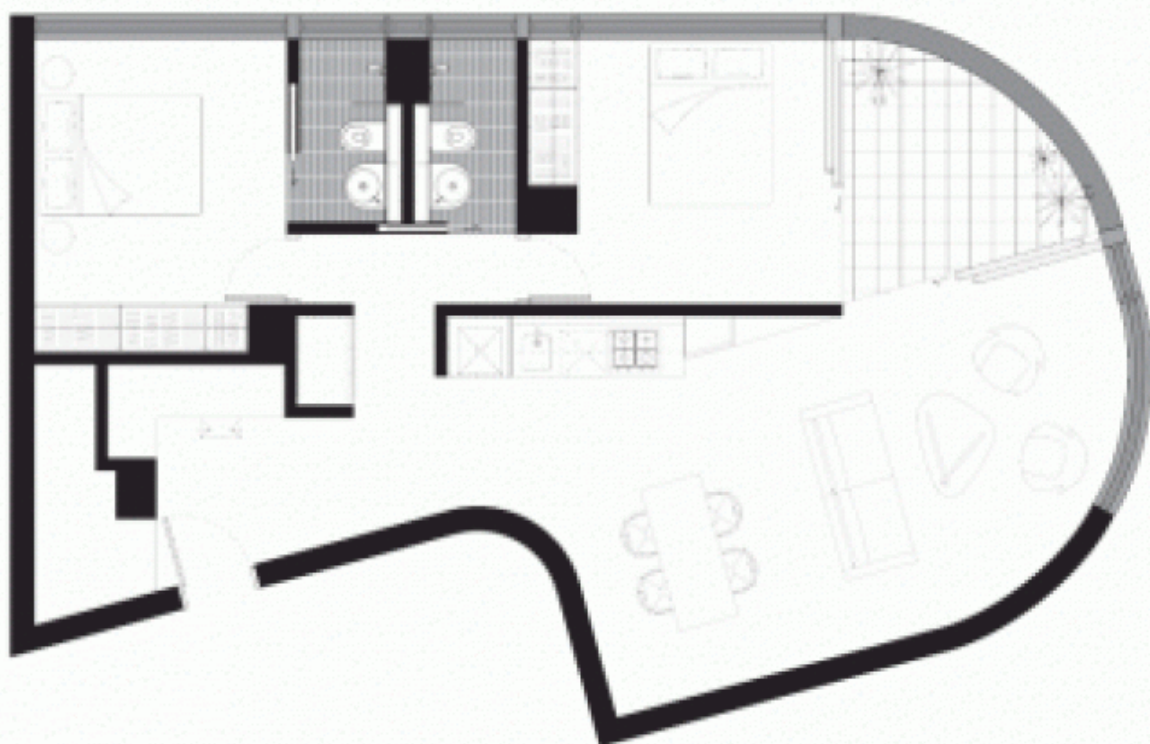
**Morton**



 [info@morton.com.au](mailto:info@morton.com.au)

[morton.com.au](http://morton.com.au)

# STELLA



#501  
2 BED - LEVEL 5

86 m<sup>2</sup>



79 sqm internal + 7 sqm balcony