



morton.

Little Bay 2/10 Darwin Avenue

1 1 1

Located just 20 minutes from the Sydney CBD and literally five minutes stroll to the sand of Little Bay Beach, the Prince Henry Hospital development comprises a unique collection of superbly restored landmark heritage buildings. This private, spacious one bedroom single storey apartment features high ceilings, grand windows and stunning colonnaded outdoor entertaining spaces.

Soaring four metre high ceilings and original features throughout
Grand windows maximising light and airflow
Separate kitchen with high end appliances
Bright bedroom with built in robe and woolen carpet
Large stylish bathroom and internal laundry with dryer
Open air car space

This is a truly unique and character filled apartment that really stands out from others in the area.

Available: 24th August 2016

morton.com.au

View

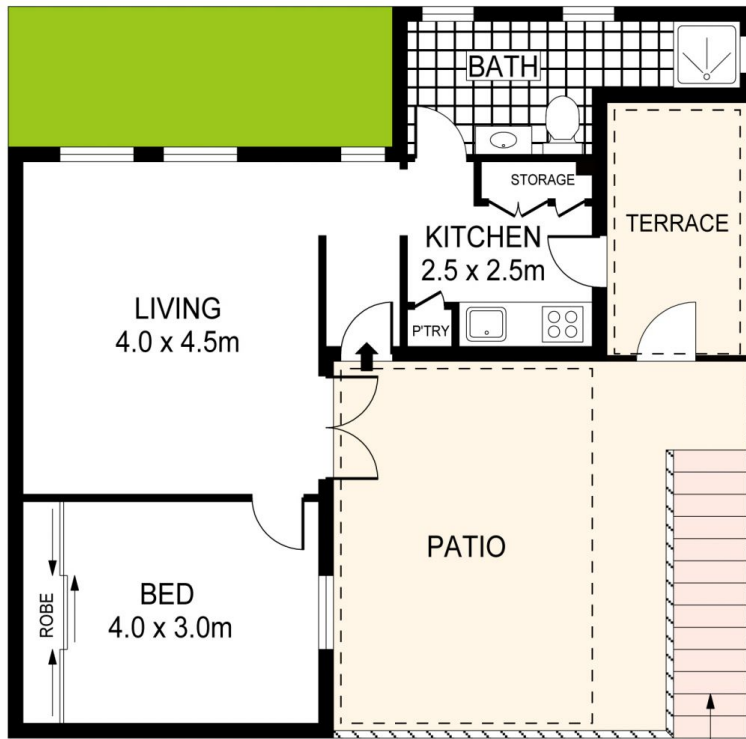
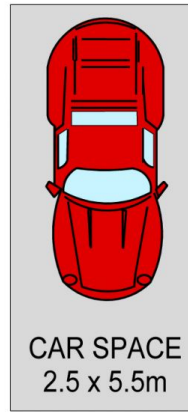
As advertised or by appointment

Agent

Morton RE



rentals@morton.com.au



GROUND LEVEL



PLANS SHOWN ONLY INDICATIVE OF LAYOUT. DIMENSIONS ARE APPROXIMATE.
Ref. No: 36814

