



**morton.**

**Zetland** 4c Wolseley Grove

 3  3  2

Tastefully presented, this modern townhouse over three levels is centrally located in the ever popular Victoria Park . Spacious open plan living flows seamlessly to the huge entertainer's terrace which is ideal for inner city living. The master bedroom features a huge walk-in robe and full sized ensuite. With an internal laundry and two security parking spaces, this apartment has everything your heart desires.

- Three double bedrooms with robes
- Modern open plan kitchen with gas cooking & dishwasher
- Combined living/dining flows to the large entertaining terrace
- Wooden floorboards throughout
- Two security car spaces with separate storage
- Three generous outdoor areas


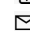
Experience the enviable Zetland lifestyle with the convenience of nearby East Village Shopping Centre at your doorstep, and all just a short stroll to local schools and city transport.

**View**

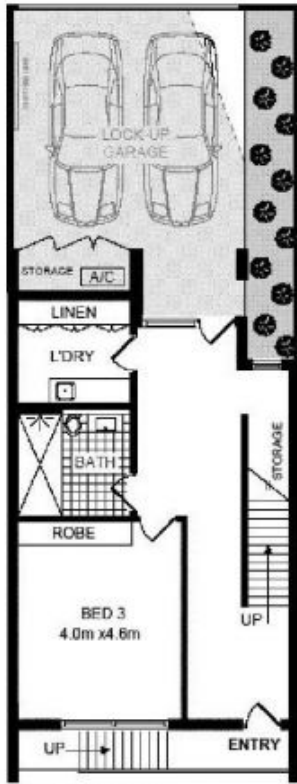
As advertised or by appointment

**Agent**

**Sarah Fowell**

 0437 492 129  
 sarah@morton.com.au

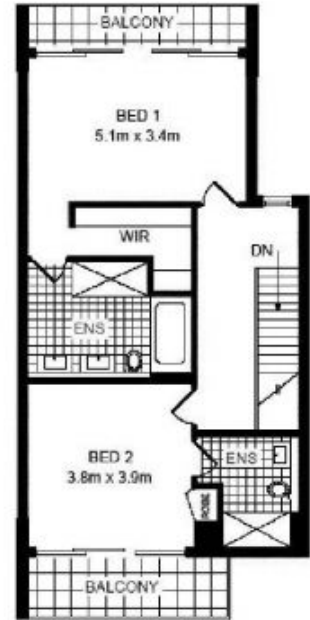
**morton.com.au**



FIRST FLOOR



SECOND FLOOR



THIRD FLOOR

