



morton.

Little Bay 1/10 Darwin Avenue

🛏 1 🚿 1 🚗 1

Located just 20 minutes from the Sydney CBD and literally five minutes stroll to the sand of Little Bay Beach, the Prince Henry Hospital development comprises a unique collection of superbly restored landmark heritage buildings. This private, spacious one bedroom single storey apartment features high ceilings, grand windows and stunning colonnaded outdoor entertaining spaces.

- ? Soaring four metre high ceilings and original features throughout
- ? Grand windows maximising light and airflow
- ? Huge colonnaded private outdoor entertaining areas
- ? Beautiful, relaxing lounge area opening onto outdoor patio
- ? Separate kitchen with high end appliances
- ? One bright bedroom with built in robe and woolen carpet
- ? Large stylish bathroom
- ? Internal laundry
- ? Open air car space
- ? Huge 27 sqm secure basement storage area

View

As advertised or by appointment

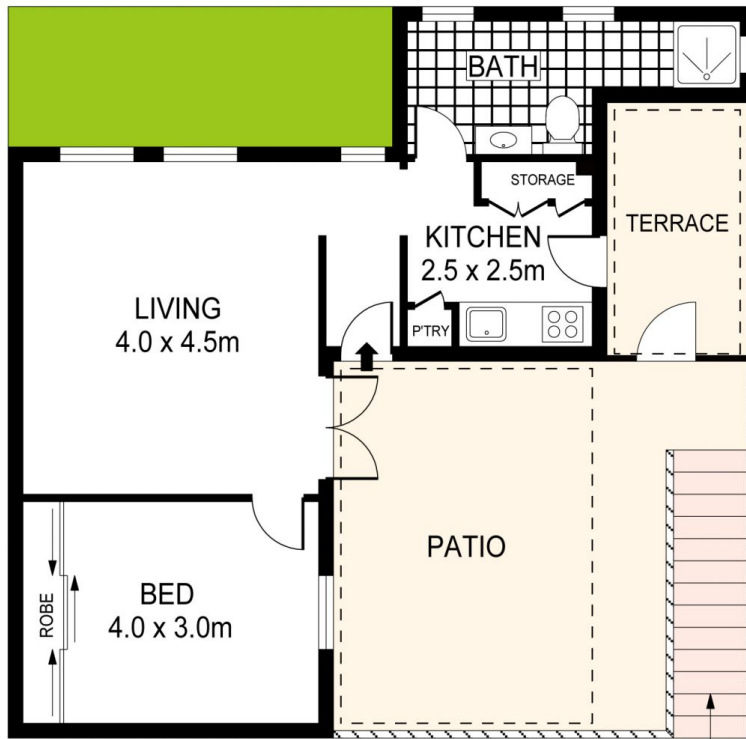
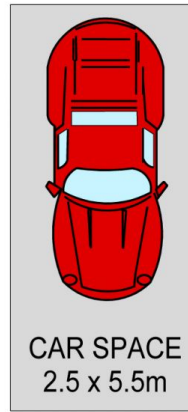
Agent

Sarah Li

📞 0439 528 933

✉ sarahli@morton.com.au

morton.com.au



GROUND LEVEL



PLANS SHOWN ONLY INDICATIVE OF LAYOUT. DIMENSIONS ARE APPROXIMATE.
Ref. No: 36814

