



# morton.

**Zetland** 120/2 Kirby Walk

🛏 2 🚿 2 🚗 1

Located in the vibrant Victoria Park precinct, just 3km from the CBD, the new Platinum development by Payce is sophisticated urban living at its best. Platinum's five buildings surround a beautifully landscaped 1,930sqm elevated garden incorporating an alfresco dining and barbecue area, intimate pavilions for relaxing and an Asian-inspired bamboo grove.

- State of the art health club featuring pool, gymnasium, steam and massage rooms
- Stainless steel Miele appliances
- LED lighting throughout
- Stone bench tops, mirrored splash back
- Data/TV points in living and main bedroom
- Security building, Video intercom
- Air conditioning throughout
- Unfurnished

### View

As advertised or by appointment

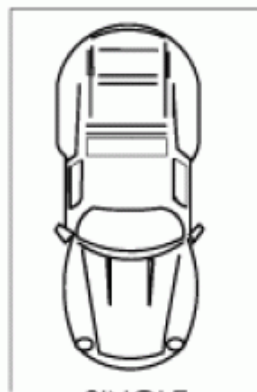
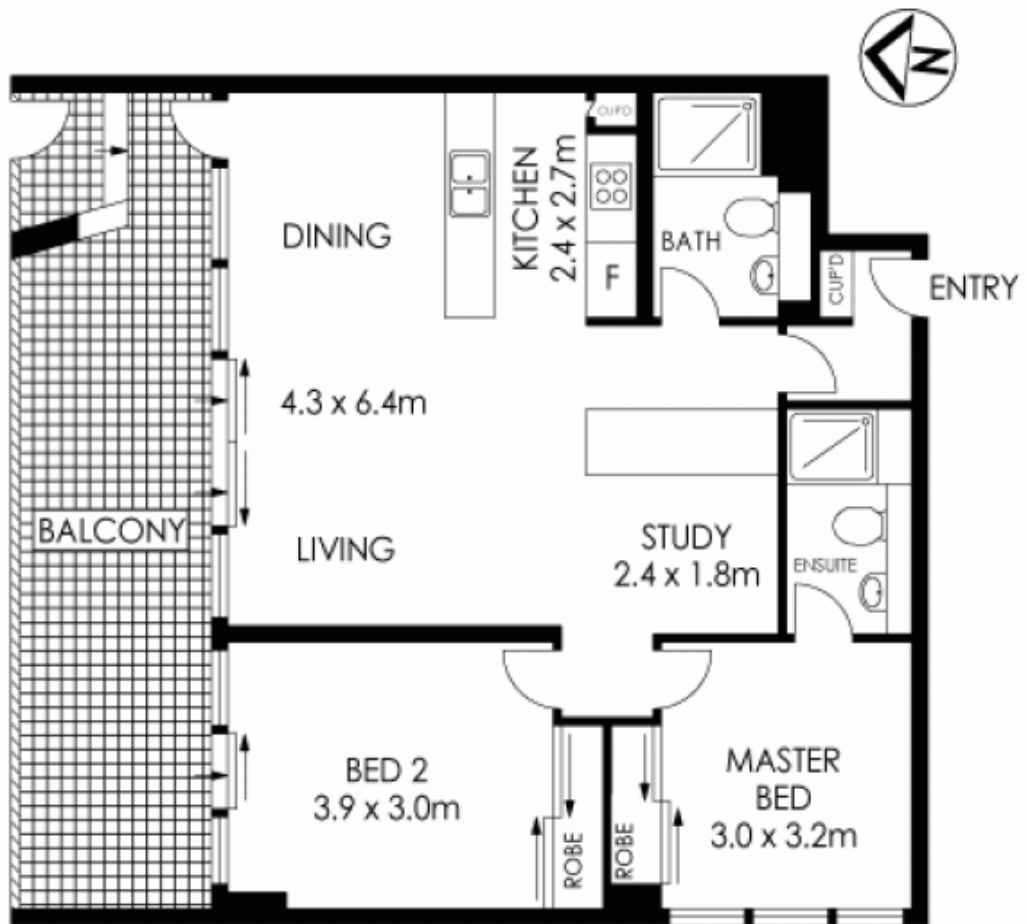
### Agent

**Sarah Fowell**

📞 0437 492 129

✉ sarah@morton.com.au

[morton.com.au](http://morton.com.au)



SINGLE CAR SPACE

STORAGE CAGE (1SQM)

## 120/2 Kirby Walk, Zetland

The information above is provided in good faith and has been provide to us from a variety of sources. We have not verified whether the information is accurate and do not have any belief one way or other in its accuracy. We do not accept any responsibility to any person for its accuracy and do no more than pass it on. All interested parties should rely on their own inquiries in order to determine whether or not this information is in fact accurate.