



morton.

Little Bay 8/8 Curie Avenue

🛏 2 🚿 2 🚗 1

Located just 20 minutes from the Sydney CBD and just two minutes walk from Little Bay Beach, East Village comprises a unique collection of superbly restored landmark heritage buildings. This two bedroom single storey apartment featuring high ceilings, grand windows, and huge entertaining spaces.

- Open plan living, dining and kitchen area
- Quality polished timber floorboards
- Soaring four metre high ceilings and original features
- Grand windows maximise light and airflow
- Huge colonnaded private outdoor entertaining areas
- Appliances including washer/dryer, refrigerator and dishwasher
- Two bright bedrooms with built in robes and neutral woollen carpets
- Two stylish bathrooms, loft storage space and internal laundry

View

As advertised or by appointment

Agent

Sarah Fowell

📞 0437 492 129

✉ sarah@morton.com.au

morton.com.au

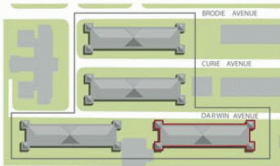
EAST VILLAGE

Two Bedroom Type 1

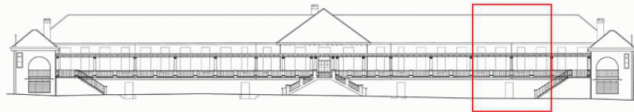


**EAST VILLAGE
APARTMENT C03
6-16 DARWIN AVENUE
PRINCE HENRY AT LITTLE BAY**

Bedrooms	2
Bathrooms	2
Carspaces	1
Internal Area	80m ²
External Area	65m ²
Storage Cage	19m ²
Total	164m ²



East Elevation



Disclaimer: Whilst the information on this panel has been carefully compiled and is correct at the time of publication (April 2011), the information and illustrations are indicative only and may be subject to change. Brookfield Residential Properties, companies related to it and its agents do not warrant the accuracy of the information or illustrations and do not accept any liability for any error or discrepancy in that information. Interested parties should undertake independent inquiries and investigations to satisfy themselves that any details herein are true and correct. The information and illustrations displayed on this panel will not form part of any contract of sale.