



morton.

Little Bay 5/10 Darwin Avenue

2 1 1

Located just 20 minutes from the Sydney CBD and just two minutes walk from Little Bay Beach, East Village comprises a unique collection of superbly restored landmark heritage buildings. This two bedroom single storey apartment featuring high ceilings, grand windows, and huge entertaining space with corridor views of the ocean.

- Open plan living, dining and kitchen area
- Soaring four metre high ceilings and original features
- Grand windows maximise light and airflow
- Huge colonnaded private outdoor entertaining areas
- Appliances including washer/dryer, refrigerator and dishwasher
- Two bright bedrooms with built in robes and neutral woollen carpets
- Stylish bathroom, loft storage space and internal laundry
- Open air car space and huge basement storage

View

As advertised or by appointment

Agent

Sarah Fowell

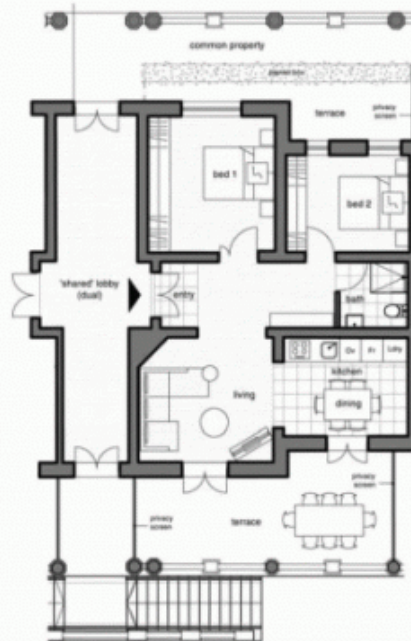
0437 492 129

sarah@morton.com.au

morton.com.au

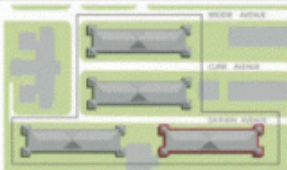
EAST VILLAGE

Two Bedroom Type 2



**EAST VILLAGE
APARTMENT C07
6-16 DARWIN AVENUE
PRINCE HENRY AT LITTLE BAY**

| | |
|------------------|--------------------|
| Bedrooms | 2 |
| Bathrooms | 1 |
| Carspaces | 1 |
| Internal Area | 68 m ² |
| External Area | 34 m ² |
| Basement Storage | 15 m ² |
| Total | 117 m ² |



East Elevation



Disclaimer: Whilst the information on this panel has been carefully compiled and is correct at the time of publication (October 2018), the information and illustrations are indicative only and may be subject to change. Multiplex Living Pty Ltd, companies related to it and its agents do not warrant the accuracy of the information or illustrations and do not accept any liability for any error or discrepancy in that information. Interested parties should undertake independent inquiries and investigations to satisfy themselves that any details herein are true and correct. The information and illustrations displayed on this panel will not form part of any contract of sale.

See it. Love it. Live it.
1300 88 99 79
multiplexliving.com