



morton.

Zetland 117/8 Victoria Park Parade

 3  2  1

To register your interest and be kept up to date with inspection times, please click Email Agent or Book an inspection directly at <http://morton.com.au/renting/rental-listings.php>

This spacious split level three bedroom apartment is located in the sought-after building 'Platinum'. Located in the vibrant Victoria Park precinct, just 3km from the CBD, the as new Platinum development by Payce is sophisticated urban living at its best. Platinum's five buildings surround a beautifully landscaped 1,930sqm elevated garden incorporating an alfresco dining and barbecue area, intimate pavilions for relaxing and an Asian-inspired bamboo grove.

- Air conditioning throughout
- Modern gas kitchen with stainless steel appliances and dishwasher
- Large balcony with separate courtyard
- 2.5 bathrooms
- Internal laundry with dryer
- Close to Green Square Station and East Village shops

morton.com.au

View

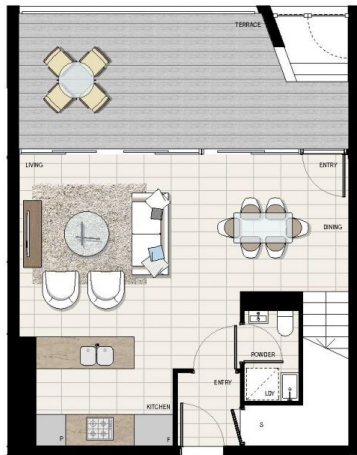
As advertised or by appointment

Agent

Sarah Fowell

 0437 492 129

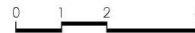
 sarah@morton.com.au



LEVEL 1



LEVEL 2



Disclaimer: This floor plan has been prepared for marketing purposes only. All descriptions, dimensions, depictions and other details in this floor plan may not be to scale and may vary to the property as built. No third party has any authority to make or give any representation or warranty in relation to the property. Your attention is drawn to the special conditions of the contract for sale. **Date Issued: 26/10/12 Revision: E**

PLATINUM

BY PAYCE

APARTMENT

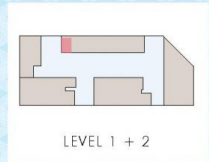
117

3 BEDROOM

INTERNAL 120 SQM

EXTERNAL 36 SQM

TOTAL 156 SQM



LEVEL 1 + 2

PROUDLY DEVELOPED BY



1300 778 777

platinumbypayce.com.au