



morton.

Zetland 605/2 Defries Avenue

 1
  1
  1

Inspection times are available. To be notified of the inspection times via email or SMS (free of charge), simply submit an enquiry here with your contact details. Alternatively please search for the listing on our website <http://www.morton.com.au> to book your own inspection online.

Located in the hub of Victoria Park, East Village offers resort-style apartment living with the largest private Sky Park in Sydney and instant access to a lively marketplace below and just 3kms to the CBD. This apartment comes with a large storage cage.

- Reverse cycle air conditioning
- Stainless steel Smeg appliances
- Soft close kitchen draws and cupboards
- Stone bench tops, mirror splash back
- LED under cupboard lighting
- Wool carpets, efficient LED down lights
- Gas bayonet to balcony for your BBQ

morton.com.au

View

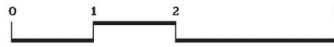
As advertised or by appointment

Agent

Sarah Fowell

 0437 492 129

 sarah@morton.com.au



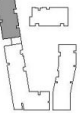
Disclaimer: This floor plan has been prepared for marketing purposes only. All descriptions, dimensions, depictions and other details in this floor plan may not be to scale and may vary to the property as built. No third party has any authority to make or give any representation or warranty in relation to the property. Your attention is drawn to the special conditions of the contract for sale. Issued 18.04.12



605 1 bed + study
1 bath
1 parking

Internal 53sqm
External 8sqm
Total 61sqm

LocationKey



Proudly developed by



eastvillage.com.au

1800 888 688