



morton.

Riverwood 05/1 Vermont Crescent

 2  2  1

Located in the new urban hub of Washington Park, Fairmount offers lifestyle apartment living within the masterplanned community. With easy access to the M5 and only 20kms to the CBD.

APARTMENT FEATURES

- Reverse cycle air conditioning
- Stainless steel kitchen appliances
- Stone bench tops, mirror splash backs
- LED under cupboard lighting
- Wool carpets, efficient LED down lights
- Data/TV points in living and main bedroom
- Recessed mirrored cabinets in bathroom
- Security building, security intercom

View

As advertised or by appointment

Agent

Sarah Fowell

 0437 492 129

 sarah@morton.com.au

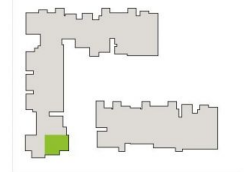
morton.com.au



**APARTMENT 105
LOT 05
2BED + STUDY**

Internal	74m ²
External	25m ²
Total	99m²

FAIRMOUNT



1300 111 088
www.washingtonpark.com.au

Proudly developed by
PAYCE

Disclaimer: This floor plan has been prepared for marketing purposes only. All descriptions, dimensions, depictions and other details in this floor plan may not be to scale and may vary from the property as built. Your attention is drawn to the special conditions of the contract for sale of land. No third party has any authority to make or give any representation or warranty in relation to the property unless the representation or warranty is confirmed by Payce Communities No.2 Pty Limited and included in the contract for sale of land. [Rev B. 31.07.13]

**We are
Washington Park.**