





morton.

Zetland 304/2 Victoria Park Parade

 1  1

Wonderfully positioned in the bustling new precinct in Victoria Park, the 'Stella' apartments will provide a new level of living. 'Stella' is superbly designed by Tzannes Associates to maximise light, open spaces and cross-flow ventilation.

- Floating timber floors throughout
- Kitchens include CaesarStone bench tops and Miele appliances
- Polyurethane finish joinery with ample storage
- Includes caged storage and video intercom
- Bathrooms with Italian fittings, and
- Feature wall tiles and mirrored storage cabinets

View

As advertised or by appointment

Agent

Sarah Fowell

 0437 492 129

 sarah@morton.com.au

morton.com.au

STELLA

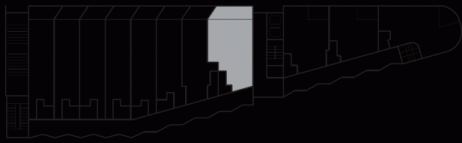


#604
1 BED+STUDY - LEVEL 6 81 m²



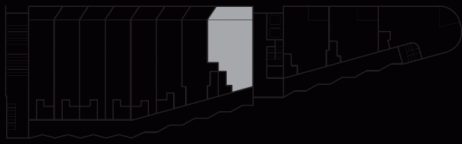
68 sqm internal + 13 sqm balcony

#304
1 BED+STUDY - LEVEL 3 81 m²



68 sqm internal + 13 sqm balcony

#104
1 BED+STUDY - LEVEL 1 81 m²



68 sqm internal + 13 sqm balcony

