



# morton.

Woolloomooloo 518/6 Cowper Wharf Roadway

3 3 1

Spacious living combined with one of Sydney's most envied locations make this the ultimate corporate retreat or family abode in the iconic 'Finger Wharf'. This apartment also has a car space in the Wharf with little to no walking distance to the apartment.

Large open living and gourmet kitchen equipped with state of the art appliances. Bedrooms include built ins and main bedroom with ensuite, all enjoy harbour views.

- Modern kitchen and bathrooms, immaculate condition
- Spectacular water and city skyline views
- Fully furnished, with modern furnishings
- West facing split level apartment
- Internal laundry
- 24hr security
- 1 x Wharf Parking Space

#### View

As advertised or by appointment

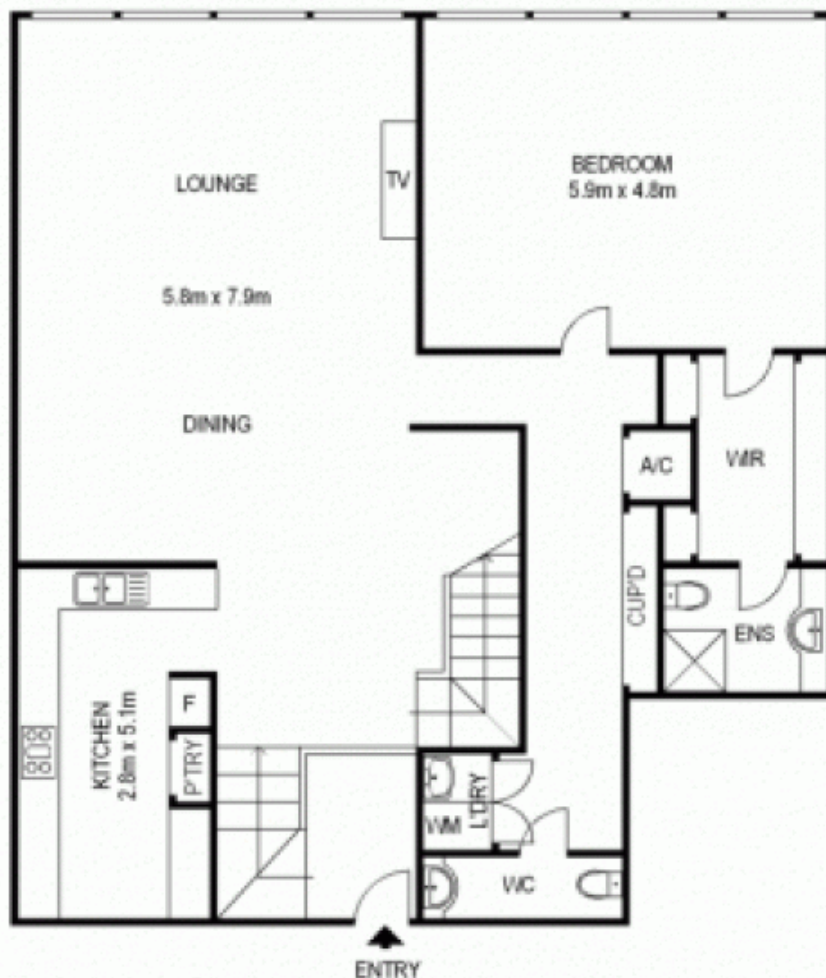
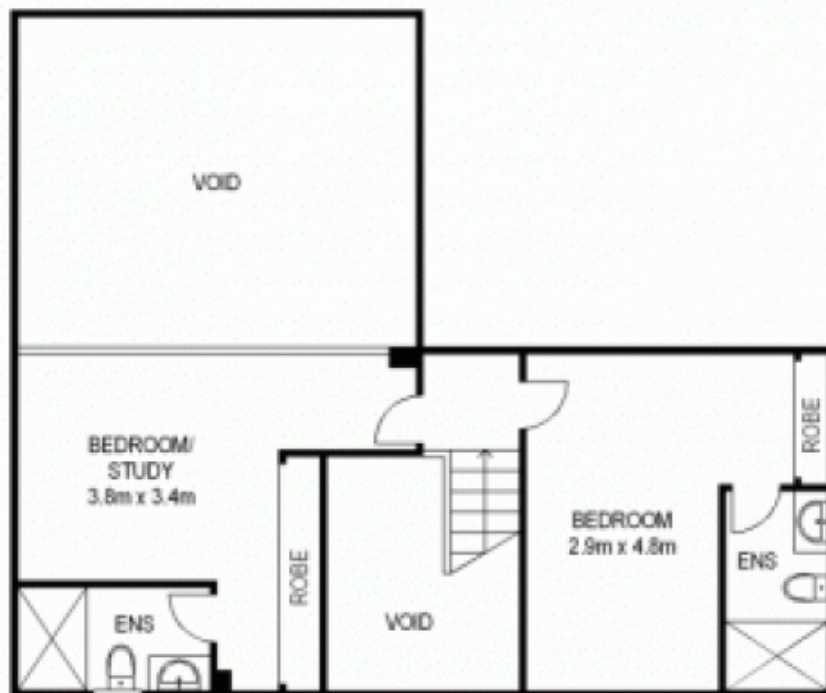
#### Agent

**Sarah Fowell**



sarah@morton.com.au

[morton.com.au](http://morton.com.au)



Scale shown in metres. All dimensions herein are approximate and gathered from sources believed to be reliable. Whilst every effort is made for the accuracy of our floor plans, interested parties should rely on their own enquires. Floor Plans by Industrie Media. [www.industriemedia.com.au](http://www.industriemedia.com.au)

